

City of Mineral Point, WI



Iowa County

"Where Wisconsin Began!"

[City of Mineral Point](#)

Mineral Point, an architectural gem in the hills of southwest Wisconsin, is a place that is often described as magical. Historic buildings, working artists, locally owned shops and restaurants, plus relaxing places to stay and lots of friendly folks,,, that is just part of what makes this a special place.

History

The first permanent settlers arrived in Mineral Point in 1827, making this the third oldest city in Wisconsin. In the 1830's, aspiring miners began to flow into the Wisconsin Territory, lured by the prospect of plentiful lead in the Driftless region. As the easy lead became scarce, greater technical knowledge was required. Immigrants from Cornwall, England fill the need. Mineral Point is "Where Wisconsin Began" with the inauguration of Henry Dodge as the first Territorial Governor of the newly formed Wisconsin Territory on July 4, 1836. From its founding days as a mining hub, through its days as the center of early Wisconsin government, Mineral Point has played an important role in the history of Wisconsin.

Mineral Point retains much of its historic character. Beginning in the 1930's and continuing today, building preservation and restoration is evident. In 1971, Mineral Point became the first Wisconsin city to be named to the National Register of Historic Places. Several historic buildings are open seasonally for public tours, including Pendarvis, Orchard Lawn, the Railroad Depot and the Opera House.

Quick Facts:

- Population: 2,544
- Median Age: 44
- Educational Attainment:
29% Bachelor's Degree or Higher
- Size of Labor Force: 1,480
- Job Growth Rate: 2,25%
- Median Household Income: \$58,322
- Average Family Size: 2.14
- Average Commute Time: 22 minutes
- Zip Code: 53565

Population:

	2015 Estimate	2020 Projection
City	2,544	2,526
20 minute drive time	13,379	13,482

Population Age (2015)		
Under 20	608	23.9%
20-39	320	20.4%
40-59	708	27.8%
60-64	199	7.8%
65+	513	20.2%

Population Race		
White	2,482	97.6%
Black	18	0.7%
Asian & Pacific Islander	18	0.7%
Other	7	0.3%
Multi-Race	18	0.7%
Hispanic	23	0.9%



Largest Private Sector Employers

Employer	Number of Employees
Cummins Emission Solutions - Other motor vehicle parts Manufacturing (NAICS 336390)	500-900
Hodan Center - Other social advocacy organization (NAICS 813319)	250-499
Sielaff Corporation - Metal household furniture manufacturing (NAICS 337124)	100-249
Atrium Health & Senior Living - Nursing Care Facility (NAICS 623110)	50-99
Ivey Construction - Ready-mix, Aggregator & Excavator (NAICS 212312)	20-49
Quality Inn - Hogtel and Motel (NAICS 721110)	20-49
Premier Cooperative - Farm supplies merchant wholesaler (NAICS 424910)	10-19
BEC Controls Corp. - Automatic environmental control manufacturing (NAICS 334512)	5-9
Hook's Cheese Company, Inc. - Cheese manufacturing (NAICS 311513)	5-9

Transportation

Highway

Located on State Hwy 23 & State Hwy 39

Nearest 4-Lane Hwy: US Hwy 151 Two exits to Mineral Point

Airports

[Iowa County Airport](#) – Mineral Point – 4.4miles

[Tri-County Regional Airport](#) – Lone Rock-29 miles

[Dane County Regional Airport](#), Madison – 58.9 miles

[General Mitchell International Airport](#), Milwaukee – 137 miles

[Chicago O'Hare International Airport](#), Chicago, IL – 153 miles

Rail

Not Served by rail

Proximity to Major Metro Markets

(miles/drive time)

- Madison (pop.- 627,430): 52 miles / 60 min.
- Milwaukee (pop.- 1.6 million): 132 miles / 2hrs.20 min.
- Chicago (pop.- 9.7 million): 167 miles / 3 hrs. 40 min.
- Minneapolis (pop.-2.6 million): 274 miles / 4 hrs. 30 min.

Bus Service & Other

- Aging and Disability Resource Center Care A Van – on call
- Lamers Bus - stops in Dodgeville (Green Bay to Dubuque)

Utilities

Electricity

[Alliant Energy](#) (800-255-4268)

Natural Gas

[Alliant Energy](#) (800-255-4268)

Water

[City of Mineral Point Public Works](#) (608-987-3442)

Source: 2 wells

Storage Capacity: 400,000 gallons

Max. Pumping Capacity: 800-1,000 gal/min

Peak Daily Use: 489,000 gallons/day

Wastewater Treatment

[City of Mineral Point Public Works](#) (608-987-3442)

System Type: Bio Tower

Design Capacity: n/a

Ave. Daily Use: 250,000 gallons/day

Telecommunications

[MHTC](#), [Charter Communications](#), [Frontier](#), [Exede](#),

[HughesNet](#), [Vonage](#), [DIRECTV](#)

Education (2014-2015 school year)

Public Schools

Elementary (PK-5th)	Mineral Point Elementary School Mineral Point, WI Enrollment: 368 student
Middle School (6th-8th)	Mineral Point Middle School Mineral Point, WI Enrollment: 147 students
High School (9th-12th)	Mineral Point High School Mineral Point, WI Enrollment: 216 students Completion Rate: 93% ACT Average Score-Composite: 21.6
College/Technical Schools	UW-Platteville – 22 miles UW-Madison – 48 miles Madison Area Technical College West Campus – 44.4 miles South Campus –50.8 miles Southwest Tech – 29.9 miles

Private Schools PreK-8th	St. Joseph School Dodgeville, WI Enrollment: 169
Private College	Edgewood College – 49.2 miles



Health Care

[Mineral Point Medical Center](#) - Mineral Point

[Dean Clinic](#) - Mineral Point

[Atrium Post Acute Care of Mineral Point](#) - Mineral Point

[Upland Hills Health](#) - Dodgeville

[Bloomfield Healthcare & Rehabilitation Center](#) – Dodgeville

Housing

Mean Home Value: \$133,800

Median Rent: \$744

Number of Housing Units: 1,278 units

Owner Occupied: 67%

Parks & Recreation

Parks, Trails, Camping

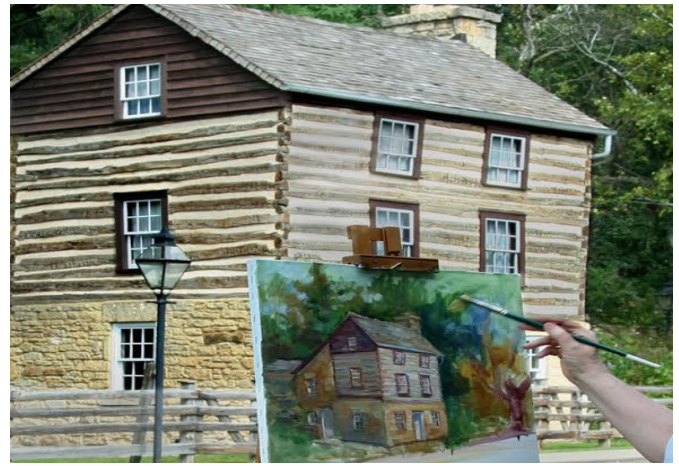
- Iowa County Fairgrounds/Camping, Mineral Point
- [Governor Dodge State Park](#) – 12.5 miles, Dodgeville
- [Yellowstone State Park](#) – 12.2 miles, Blanckardville
- [Military Ridge State Trail](#) – 8 miles, Dodgeville
- [Tom's Campground](#) – 15 miles, Dodgeville
- [Blackhawk Lake Recreation Area](#) – 19.3 miles, Highland

Golf Courses

- [House on the Rock Resort](#) – 27 holes: 25 miles
- [Dodge Point Country Club](#) – 18 holes: 4 miles
- [Deer Valley Golf Course](#) – 27 holes: 20 miles
- [Ludden Lake](#) – 9 holes: 2.7 miles

Swimming Pools

- The City of Mineral Point operates an outdoor swimming pool during the summer season. (resident and non-resident rates available)



Visitor Attractions

There are many visitor attractions and annual events held in the City of Mineral Point, including Gallery Nights, July 4th Celebration, Iowa County Fair, Cornish Festival, Fall Art Tour and Candlelight Shopping during the Christmas holiday. For details regarding these events and a complete list of other activities, go to <http://mineralpoint.com>

Government

Mineral Point is governed by Mayor/Council form of government. Two alderpersons are elected from each of four wards for two-year terms. The Mayor is elected at-large for a two-year term. City Council meetings are held on the second Monday of each month at 5:30 pm at the City Hall Community Room, 137 High Street, Suite 1.

City Hall is open Monday - Friday 8:00 am - 4:30 pm

Check www.mineralpoint.net for more information.

Tax Rate .023643668 or \$23.64 per 1000

Key Community Contacts

City of Mineral Point

Administrator/Clerk-Treasurer - Debi Heisner

Phone: 608-987-2361

email: d.heisner@cityofmineralpoint.com

Sources

[City of Mineral Point Website](#)

[Mineral Point Chamber of Commerce](#)

[Iowa County Economic Development](#)

[InWisconsin.com](#)

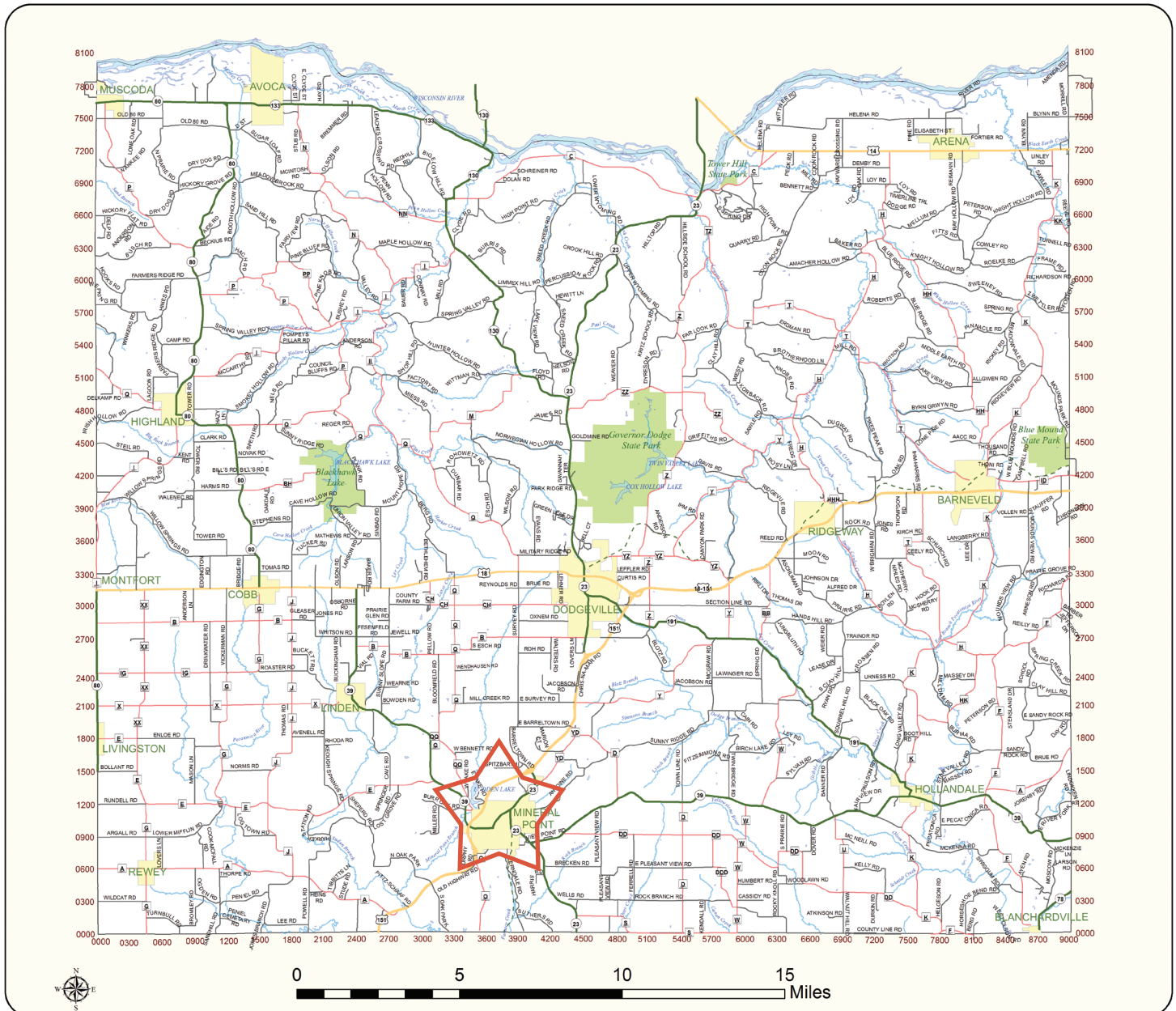
[Census.gov](#)

[WiseDash](#)

City of Mineral Point, WI



Iowa County



SOUTHWESTERN WISCONSIN
REGIONAL PLANNING
COMMISSION