

LEGEND

Legend table listing existing (EX.) and proposed (PROP.) items such as manholes, sewers, water mains, storm sewers, and utilities with their corresponding symbols and line styles.

Legend table listing proposed (PROP.) items such as curbs, gutters, pavements, and structures with their corresponding hatched or patterned symbols.

KEY NOTES 100 :

- 100 PROPOSED SILT FENCE FOR EROSION CONTROL.
101 PROPOSED SEDIMENT LOG FOR EROSION CONTROL.
102 PROPOSED TRACKING PAD FOR EROSION CONTROL.
103 RE-GRADE YARD/DITCH LINE (MIN. SLOPE 1.0%).
104 PROPOSED EROSION MAT CLASS I, TYPE 'B'.
105 INSTALL TYPE 'D' INLET PROTECTION.
106 PROPOSED MAIL BOX RELOCATION.
107 ITEM TO REMAIN.
108 CONTRACTOR TO REMOVE ITEM.
200 PROPOSED SANITARY SEWER [SIZE].
201 NEW SANITARY SEWER LATERAL [SIZE].
202 REPLACE EXISTING SANITARY SEWER LATERAL.
203 RECONNECT EXISTING SANITARY SEWER LATERAL.
204 CONNECTION TO EXISTING SANITARY SEWER PIPE/STRUCTURE.
205 REMOVE EXISTING SANITARY SEWER PIPE /STRUCTURE.
206 REHABILITATE SANITARY MANHOLE; SEE TABLE 'B'.
207 SANITARY SEWER SPOT REPAIR.
208 ABANDON AND CAP EXISTING SANITARY SEWER.
209 ABANDON EXISTING SANITARY SEWER LATERAL.
210 CONTRACTOR TO FIELD VERIFY SANITARY SEWER LATERAL LOCATION/ACTIVITY AND REPLACE ACCORDING TO ENGINEER.
300 PROPOSED WATER MAIN [SIZE].
301 NEW WATER SERVICE [SIZE].
302 REPLACE EXISTING WATER SERVICE WITH 1" WATER SERVICE.
303 RECONNECT EXISTING WATER SERVICE.
304 DIRECTIONAL DRILL PROPOSED WATER SERVICE.
305 CONNECTION TO EXISTING WATER MAIN.
306 EXISTING HYDRANT TO BE REMOVED AND SALVAGED TO OWNER.
307 REMOVE EXISTING WATER MAIN VALVE BOX/STRUCTURE.
308 ADJUST EXISTING WATER MAIN VALVE BOX.
309 ABANDON, DRAIN, & CAP EXISTING WATER MAIN.
310 ABANDON EXISTING WATER SERVICE.
311 CONTRACTOR TO FIELD VERIFY WATER SERVICE LOCATION/ACTIVITY AND REPLACE ACCORDING TO ENGINEER.
400 PROPOSED STORM SEWER [SIZE].
401 CONNECT EXISTING ROOF DRAIN TO CURB OPENING CONNECTION TO EXISTING STORM SEWER PIPE/STRUCTURE.
402 REMOVE EXISTING STORM SEWER PIPE/STRUCTURE.
403 ABANDON & CAP EXISTING STORM SEWER.
404 ADJUST EXISTING STORM STRUCTURE.
500 TREE & STUMP TO BE REMOVED (LESS THEN 12")
501 TREE & STUMP TO BE REMOVED (12" & GREATER)
502 SHRUB TO BE REMOVED.
503 CLEAR AND GRUB BRUSH LINE AS NECESSARY TO COMPLETE CONSTRUCTION. ALL CLEARING TO BE VERIFIED BY PROJECT ENGINEER.
504 REMOVE AND REINSTALL/REPLACE EXISTING LANDSCAPING, FENCE, RETAINING WALL, ETC. (IF NECESSARY).
505 REMOVE EXISTING LANDSCAPING, FENCE, RETAINING WALL, ETC.
506 POLE/PEDESTAL TO BE SECURED BY UTILITY COMPANY DURING CONSTRUCTION.
507 POLE TO BE RELOCATED BY UTILITY COMPANY.
508 GUY WIRE TO BE RELOCATED BY UTILITY COMPANY.
509 PEDESTAL TO BE RELOCATED BY UTILITY COMPANY.
510 UTILITY CONFLICT - TO BE RELOCATED/ADJUSTED BY UTILITY COMPANY.
511 POTENTIAL UTILITY CONFLICT - VERIFY WITH UTILITY COMPANY.
600 REMOVE EXISTING CURB & GUTTER.
601 PROPOSED 24" CONCRETE CURB & GUTTER.
602 PROPOSED 30" CONCRETE CURB & GUTTER.
603 PROPOSED 36" CONCRETE CURB & GUTTER.
604 MATCH TO EXISTING CURB & GUTTER.
605 PROVIDE TYPE 'X' CURB.
606 PROVIDE REVERSE-PITCH CURB & GUTTER.
607 PROVIDE CURB TAPER.
608 REMOVE ASPHALT/CONCRETE/WALL/STEPS.
609 PROPOSED 4" CONCRETE SIDEWALK.
610 PROPOSED 6" CONCRETE SIDEWALK/DRIVEWAY.
611 PROPOSED 6" CONCRETE PAVEMENT.
612 PROPOSED 8" CONCRETE PAVEMENT.
613 PROPOSED CONCRETE STEPS. STEP RISE HEIGHT AND STEP TREAD DEPTH SHALL MEET APPLICABLE BUILDING CODES. CONTRACTOR SHALL CONFIRM REQUIRED NUMBER OF STEPS WITH PROJECT ENGINEER PRIOR TO INSTALL.
614 PROPOSED 2' GRAVEL SHOULDER.
615 REGRADE EXISTING GRAVEL.
616 PROPOSED GRAVEL DRIVEWAY.
617 REMOVE & REPLACE GRAVEL DRIVEWAY.
618 REMOVE GRAVEL DRIVEWAY & REPLACE WITH BITUMINOUS DRIVEWAY/APRON.

NOTES:

TRAFFIC CONTROL NOTE: ALL CONTRACTORS MUST CONFORM TO THE MANUAL OF UNIFORM TRAFFIC CONTROL DEVICES (MUTCD) AND THE REQUIREMENTS OF THE WISCONSIN DEPARTMENT OF TRANSPORTATION. ONE LANE OF TRAFFIC MUST REMAIN OPEN DURING AND AFTER ALL CONSTRUCTION ACTIVITIES FOR EMERGENCY VEHICLE ACCESS.
STREET SIGN NOTE: CONTRACTOR WILL BE RESPONSIBLE FOR REMOVING, STORING, AND RESETTING ALL PERMANENT SIGNS. CONTRACTOR IS RESPONSIBLE FOR PROTECTING ALL EXISTING SIGNS UNTIL REMOVED. CONTRACTOR IS RESPONSIBLE FOR ANY AND ALL TEMPORARY SIGNS THAT MAY BE REQUIRED.
TRAFFIC SIGN NOTE: CONTRACTOR TO PROVIDE TEMPORARY TRAFFIC SIGNS FOR ANY TRAFFIC SIGNS DISTURBED DURING CONSTRUCTION. ALL DISTURBED TRAFFIC SIGNS MUST BE REPLACED AND INSTALLED AS PER LOCAL REGULATIONS AT THE COMPLETION OF THE PROJECT.

SANITARY SEWER LATERAL NOTE: THE LOCATION OF EXISTING SANITARY SEWER LATERALS ARE APPROXIMATE. THE CONTRACTOR SHALL VERIFY THE LOCATION AND STATUS OF EACH SANITARY SEWER LATERAL ENCOUNTERED. ONLY ACTIVE SANITARY SEWER LATERALS SHALL BE CONNECTED TO THE NEW SANITARY SEWER MAIN.
CASTING NOTE: ALL EXISTING MANHOLE CASTINGS AND STORM SEWER CASTINGS TO BE REMOVED AND/OR REPLACED SHALL BE SALVAGED TO THE CITY OF MINERAL POINT.

WATER SYSTEM NOTE: CONTRACTOR TO SALVAGE EXISTING HYDRANTS TO BE REMOVED TO THE CITY OF MINERAL POINT. REMOVE EXISTING HYDRANTS TO A MINIMUM DEPTH OF 4'-0".
TRACER WIRE NOTE: TRACER WIRE (12 GAUGE) TO BE INSTALLED WITH ALL POLYVINYL CHLORIDE (PVC) AND CLASS 52 DUCTILE IRON PIPE WATER MAIN.

WATER SERVICE NOTE: CONTRACTOR TO VERIFY STATUS AND LOCATION OF EACH WATER SERVICE ENCOUNTERED. CONTRACTOR TO REPLACE ACCORDING TO ENGINEER. ONLY ACTIVE WATER SERVICES SHALL BE CONNECTED TO THE NEW WATER MAIN.
SITE RESTORATION NOTE: CONTRACTOR WILL BE RESPONSIBLE FOR REPLACEMENT OF ALL DISTURBED PROJECT AREA COMPONENTS INCLUDING, BUT NOT LIMITED TO, EXISTING CONCRETE, BITUMINOUS PAVEMENT, GRAVEL, CULVERTS, WATER AND SANITARY SEWER SYSTEM COMPONENTS, STORM SEWER SYSTEM COMPONENTS, TREES, LAWN ORNAMENTS, FENCING, YARD LANDSCAPING, RETAINING WALLS, MAILBOXES, AND LANDSCAPE AREAS.

PROPERTY DAMAGES: THE CONTRACTOR IS RESPONSIBLE FOR THE PRESERVATION OF ADJACENT PROPERTY AND FOR ANY DAMAGE TO THE SITE OR TO ADJACENT PROPERTY INCIDENTAL TO THE CONSTRUCTION ACTIVITIES. AFTER THE COMPLETION OF CONSTRUCTION, ANY AREAS ADJACENT TO THE CONSTRUCTION SITE DAMAGED BY THE CONTRACTOR DURING EXECUTION OF THE CONTRACT SHALL BE RESTORED TO MATCH THE PRECONSTRUCTION CONDITIONS.

RETAINING WALL NOTE: CONTRACTOR WILL BRACE ALL EXISTING AND PROPOSED RETAINING WALLS DURING CONSTRUCTION AS NECESSARY TO PROTECT THEM FROM DAMAGE. NO HEAVY EQUIPMENT SHALL BE ALLOWED WITHIN 10 FEET OF EXISTING RETAINING WALLS UNLESS OTHERWISE APPROVED BY PROJECT ENGINEER.

EROSION CONTROL NOTE: CONTRACTOR TO INSTALL BACKFILL MATERIAL INTO THE EXCAVATED TRENCH AS SOON AS POSSIBLE TO IMPLEMENT EROSION CONTROL.

PROPERTY LINE AND RIGHT-OF-WAY NOTE: ALL RIGHT-OF-WAYS AND PROPERTY LINES SHOWN ARE APPROXIMATE AND FOR ILLUSTRATIVE PURPOSES ONLY. A PROPERTY SURVEY PERFORMED BY A PROFESSIONAL LAND SURVEYOR SHOULD BE COMPLETED TO DETERMINE THE ACTUAL PROPERTY LINE AND RIGHT-OF-WAY LOCATIONS.

MAILBOX RELOCATION NOTE: CONTRACTOR TO RELOCATE EXISTING MAILBOXES DURING CONSTRUCTION (COORDINATE AND VERIFY WITH LOCAL POSTAL SERVICE ON LOCATION). RESET BEHIND CURB AND GUTTER OR SHOULDER ACCORDING TO THE REQUIREMENTS OF THE LOCAL POSTMASTER UPON COMPLETION OF STREET CONSTRUCTION.

TREE TRIMMING NOTE: CONTRACTOR TO PROPERLY TRIM ALL TREE BRANCHES, ROOTS, AND BUSHES DISTURBED DUE TO SANITARY SEWER, WATER SYSTEM, STORM SEWER, AND STREET CONSTRUCTION.

TREE REMOVAL NOTE: CONTRACTOR TO CONTACT ENGINEER OR CITY OF MINERAL POINT FOR VERIFICATION PRIOR TO ANY TREE REMOVAL.

SAW CUT NOTE: CONTRACTOR TO PROVIDE FULL DEPTH SAW CUTS AND REPLACE PAVEMENT.

UTILITIES' NOTE: THE LOCATIONS OF THE UNDERGROUND UTILITIES SHOWN ON THE PLAN HAVE BEEN OBTAINED BY FIELD CHECKS, A UTILITY LOCATE THROUGH DIGGER'S HOTLINE, AND SEARCHES OF AVAILABLE RECORDS. IT IS BELIEVED THAT THEY ARE ESSENTIALLY CORRECT, BUT THE SURVEYOR DOES NOT GUARANTEE THEIR ACCURACY OR COMPLETENESS. THE CONTRACTOR SHOULD VERIFY LOCATIONS W/ THE UTILITY COMPANIES AND CITY OF MINERAL POINT PRIOR TO STARTING ANY EXCAVATION.

- 619 REMOVE & REPLACE HMA PAVEMENT.
620 REMOVE & REPLACE HMA PAVEMENT DRIVEWAY.
621 REMOVE HMA PAVEMENT.
622 MATCH TO EXISTING EDGE PAVEMENT.
623 PROPOSED RESIDENTIAL HMA PAVEMENT DRIVEWAY.
624 PROPOSED COMMERCIAL HMA PAVEMENT DRIVEWAY.
625 REMOVE & REPLACE 4" CONCRETE SIDEWALK.
626 REMOVE & REPLACE 6" CONCRETE SIDEWALK/DRIVEWAY.
627 PROPOSED HANDICAP RAMP WITH - D. WORN. FIELD [S.F.].
628 SAW CUT PCC PAVEMENT.
629 SAW CUT HMA PAVEMENT.
630 PROPOSED BITUMINOUS WEDGE CURB.

Table with columns for DISCIPLINE, DESIGNATION, and REVISIONS. Includes rows for GENERAL, CIVIL, LANDSCAPE, AQUATIC, ARCHITECTURAL, STRUCTURAL, ELECTRICAL, INSTRUMENTATION/CONTROLS, PROCESS, PLUMBING, HVAC /MECHANICAL and a revision table.

Table for DISCIPLINE DESIGNATORS with columns for TYPE, NOTES & SCHEDULES, PLANS, ELEVATIONS & DETAILS, CROSS-SECTIONS, DIAGRAMS, and DRAWING SHEET DESIGNATION.

Table for SHEET NUMBER IDENTIFICATION with columns for DRAWING NUMBER, DRAWING SHEET DESIGNATION, DISCIPLINE DESIGNATION, and SHEET NUMBER #.

DELTA 3 logo and contact information for Delta 3 Engineering, Inc. including address and phone numbers.

FOR QUESTIONS REGARDING THIS PROJECT, PLEASE CONTACT: MR. MARK DIGMAN, P.E. DELTA 3 ENGINEERING, INC. TELEPHONE: (608) 348-5355

CONSENT STATEMENT: ALL RIGHTS RESERVED. AND NO REPRODUCTION WITHOUT CONSENT. ALL DRAWINGS, SPECS, REPORTS, DATA, AND OTHER DOCUMENTS CONTAINED ON THIS PLAN SHEET ARE CREATED BY AND FOR DELTA 3 ENGINEERING AND THEIR CLIENTS USE. REPRODUCTION, OR DISTRIBUTION OF ANY CONTENT HEREIN, IN ANY FORM, WHETHER PRINTED, ELECTRONIC, OR OTHERWISE, REQUIRES THE EXPLICIT WRITTEN PERMISSION OF THE OWNER.

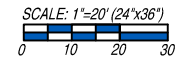
PROPOSED 2020 INFRASTRUCTURE IMPROVEMENTS - PINE STREET MINERAL POINT, WI PROJECT LOCATION: PINE STREET (W. COMMERCE ST- WASHINGTON ST) OWNER: CITY OF MINERAL POINT; 137 HIGH STREET, SUITE 1, MINERAL POINT, WI 53565

Table for REVISIONS with columns for NO., DATE, and DESCRIPTION.

Table for FOR BID with columns for PROJECT NUMBER, SHEET SCALE, DRAWN BY, DATE ISSUED, and SHEET DESC.

SHEET TITLE: G001 SHEET NUMBER # 02 of 15

BENCH MARK TABLE			
BM NO.	DESCRIPTION	LOCATION	ELEVATION
BM #1	TOP NUT OF FIRE HYDRANT #112	NORTHEAST SIDE OF W. COMMERCIAL STREET & PINE STREET INTERSECTION	1108.88'
BM #2	TOP NUT OF FIRE HYDRANT #113	NORTHWEST CORNER OF MINERAL STREET & PNE STREET INTERSECTION	1076.90'



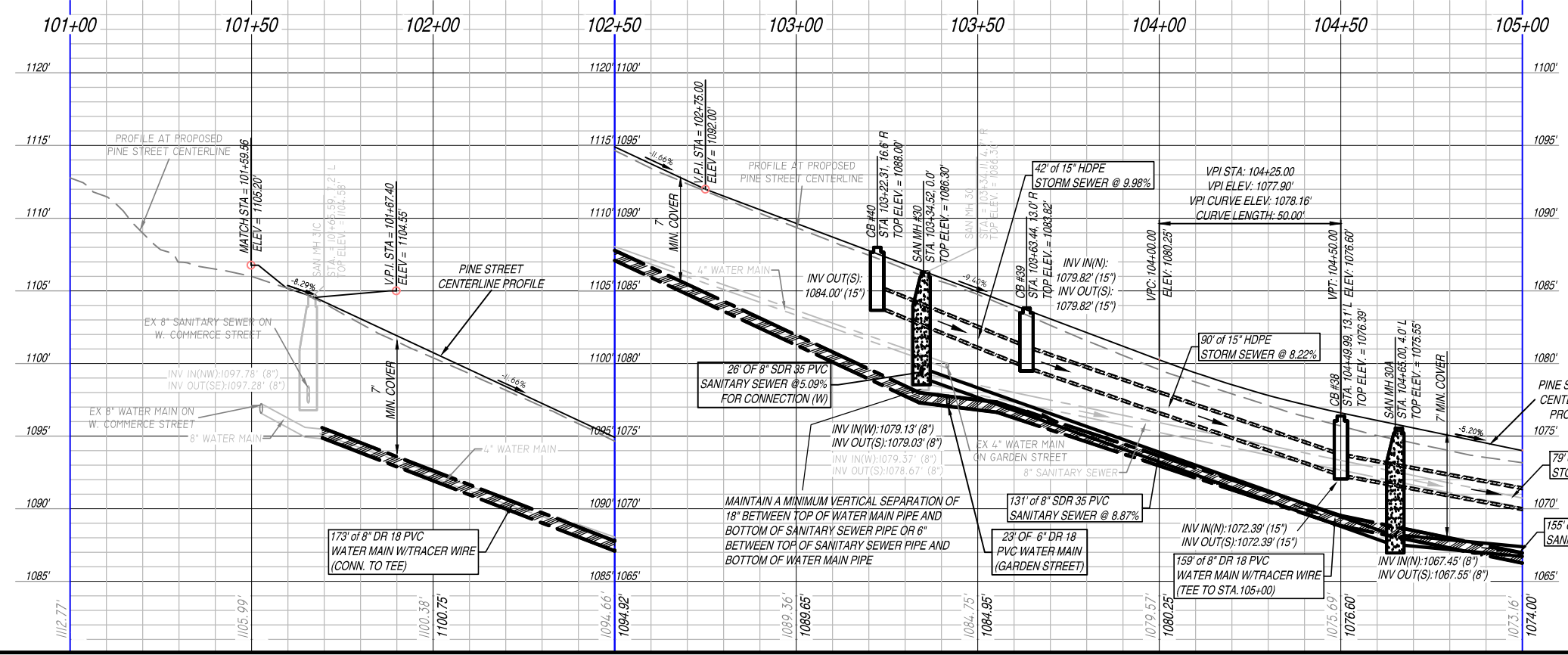
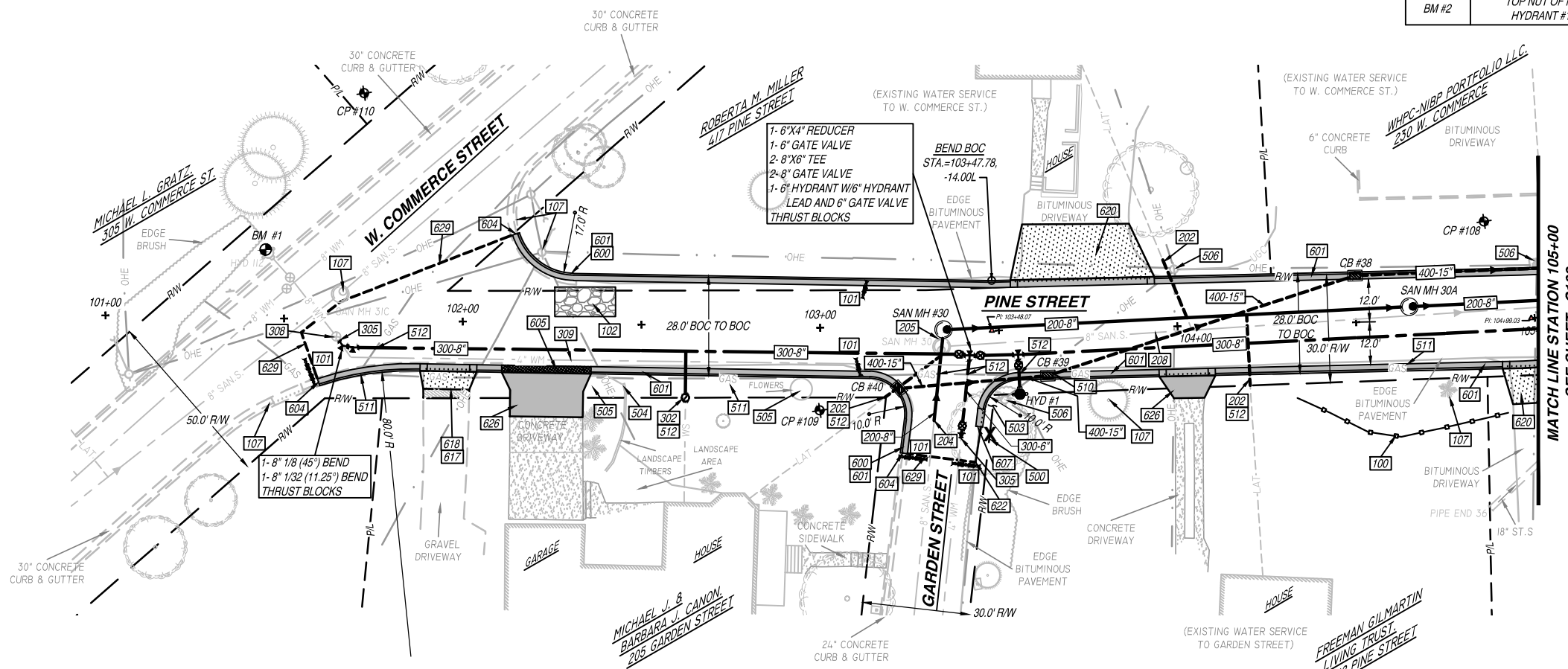
FOR QUESTIONS REGARDING THIS PROJECT, PLEASE CONTACT:

MR. MARK DIGMAN, P.E.
 DELTA 3 ENGINEERING, INC.
 TELEPHONE: (608) 348-5355

CONSENT STATEMENT
 ALL RIGHTS RESERVED, AND NO REPRODUCTION WITHOUT CONSENT. ALL DRAWINGS, SPECS, REPORTS, DATA, AND OTHER DOCUMENTS CONTAINED ON THIS PLAN SHEET ARE CREATED BY AND FOR DELTA 3 ENGINEERING AND THEIR CLIENTS' USE. USE, REPRODUCTION, OR DISTRIBUTION OF ANY CONTENT HEREIN, IN ANY FORM, WHETHER PRINTED, ELECTRONIC, OR OTHERWISE, REQUIRES THE EXPLICIT WRITTEN PERMISSION OF THE OWNER.

KEY NOTES [100] :

- 100 PROPOSED SILT FENCE FOR EROSION CONTROL.
- 101 PROPOSED SEDIMENT LOG FOR EROSION CONTROL.
- 102 PROPOSED TRACKING PAD FOR EROSION CONTROL.
- 107 ITEM TO REMAIN.
- 200 PROPOSED SANITARY SEWER [SIZE].
- 202 REPLACE EXISTING SANITARY SEWER LATERAL.
- 204 CONNECTION TO EXISTING SANITARY SEWER PIPE/STRUCTURE.
- 205 REMOVE EXISTING SANITARY SEWER PIPE /STRUCTURE.
- 208 ABANDON AND CAP EXISTING SANITARY SEWER.
- 300 PROPOSED WATER MAIN [SIZE].
- 302 REPLACE EXISTING WATER SERVICE WITH 1" WATER SERVICE.
- 305 CONNECTION TO EXISTING WATER MAIN.
- 308 ADJUST EXISTING WATER MAIN VALVE BOX.
- 309 ABANDON, DRAIN, & CAP EXISTING WATER MAIN.
- 400 PROPOSED STORM SEWER [SIZE].
- 500 TREE & STUMP TO BE REMOVED (LESS THEN 12")
- 503 CLEAR AND GRUB BRUSH LINE AS NECESSARY TO COMPLETE CONSTRUCTION. ALL CLEARING TO BE VERIFIED BY PROJECT ENGINEER.
- 504 REMOVE AND REINSTALL/REPLACE EXISTING LANDSCAPING, FENCE, RETAINING WALL, ETC. (IF NECESSARY).
- 505 REMOVE EXISTING LANDSCAPING, FENCE, RETAINING WALL, ETC.
- 506 POLE/GUY WIRE/PEDESTAL TO BE SECURED BY UTILITY COMPANY DURING CONSTRUCTION.
- 510 UTILITY CONFLICT - TO BE RELOCATED/ADJUSTED BY UTILITY COMPANY.
- 511 POTENTIAL UTILITY CONFLICT - VERIFY WITH UTILITY COMPANY.
- 512 CAUTION! - UTILITY CROSSING.
- 600 REMOVE EXISTING CURB & GUTTER.
- 601 PROPOSED 24" CONCRETE CURB & GUTTER.
- 604 MATCH TO EXISTING CURB & GUTTER.
- 605 PROVIDE TYPE 'X' CURB.
- 607 PROVIDE CURB TAPER.
- 617 REMOVE & REPLACE GRAVEL DRIVEWAY.
- 618 REMOVE GRAVEL DRIVEWAY & REPLACE WITH BITUMINOUS DRIVEWAY/APRON.
- 620 REMOVE & REPLACE HMA PAVEMENT DRIVEWAY.
- 622 MATCH TO EXISTING EDGE PAVEMENT.
- 626 REMOVE & REPLACE 6" CONCRETE SIDEWALK/DRIVEWAY.
- 629 SAW CUT HMA PAVEMENT.



REVISIONS		
NO.	DATE	DESCRIPTION

AS-BUILT: _____ BY: _____

FOR BID	
PROJECT NUMBER	D20-001
SHEET SCALE	HORIZ.-1"=20' VERT.-1"=5'
DRAWN BY	C. COYIER
DATE ISSUED	APRIL 27, 2020
SHEET DESC.	PLAN & PROFILE - PINE STREET

SHEET TITLE:
C101
 SHEET NUMBER # 03 of 15

PROPOSED 2020 INFRASTRUCTURE IMPROVEMENTS - PINE STREET
 MINERAL POINT, WI
 PROJECT LOCATION: PINE STREET (W. COMMERCIAL ST. - WASHINGTON ST.)
 OWNER: CITY OF MINERAL POINT; 137 HIGH STREET, SUITE 1, MINERAL POINT, WI 53965

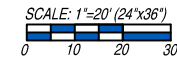
KEY NOTES 100 :

- 100 PROPOSED SILT FENCE FOR EROSION CONTROL.
- 101 PROPOSED SEDIMENT LOG FOR EROSION CONTROL.
- 102 PROPOSED TRACKING PAD FOR EROSION CONTROL.
- 106 PROPOSED MAIL BOX RELOCATION.
- 107 ITEM TO REMAIN.
- 200 PROPOSED SANITARY SEWER (SIZE).
- 201 NEW SANITARY SEWER LATERAL (SIZE).
- 203 RECONNECT EXISTING SANITARY SEWER LATERAL.
- 204 CONNECTION TO EXISTING SANITARY SEWER PIPE/STRUCTURE.
- 205 REMOVE EXISTING SANITARY SEWER PIPE /STRUCTURE.
- 206 REHABILITATE SANITARY MANHOLE; SEE TABLE 'B'.

- 300 PROPOSED WATER MAIN (SIZE).
- 301 NEW WATER SERVICE (SIZE).
- 302 REPLACE EXISTING WATER SERVICE WITH 1" WATER SERVICE.
- 305 CONNECTION TO EXISTING WATER MAIN.
- 307 REMOVE EXISTING WATER MAIN VALVE BOX/STRUCTURE.
- 309 ABANDON, DRAIN, & CAP EXISTING WATER MAIN.
- 400 PROPOSED STORM SEWER (SIZE).
- 402 CONNECTION TO EXISTING STORM SEWER PIPE/STRUCTURE.
- 403 REMOVE EXISTING STORM SEWER PIPE/STRUCTURE.
- 506 POLE/PEDESTAL TO BE SECURED BY UTILITY COMPANY DURING CONSTRUCTION.
- 510 UTILITY CONFLICT - TO BE RELOCATED/ADJUSTED BY UTILITY COMPANY.
- 511 POTENTIAL UTILITY CONFLICT - VERIFY WITH UTILITY COMPANY.
- 512 CAUTION! - UTILITY CROSSING.

- 600 REMOVE EXISTING CURB & GUTTER.
- 601 PROPOSED 24" CONCRETE CURB & GUTTER.
- 604 MATCH TO EXISTING CURB & GUTTER.
- 607 PROVIDE CURB TAPER.
- 608 REMOVE ASPHALT/CONCRETE/WALL/STEPS.
- 617 REMOVE & REPLACE GRAVEL DRIVEWAY.
- 620 REMOVE & REPLACE HMA PAVEMENT DRIVEWAY.
- 622 MATCH TO EXISTING EDGE PAVEMENT.
- 625 REMOVE & REPLACE 4" CONCRETE SIDEWALK.
- 626 REMOVE & REPLACE 6" CONCRETE SIDEWALK/DRIVEWAY.
- 627 PROPOSED HANDICAP RAMP WITH - D. WARN. FIELD [S.F.].
- 629 SAW CUT HMA PAVEMENT.

BM NO.	DESCRIPTION	LOCATION	ELEVATION
BM #1	TOP NUT OF FIRE HYDRANT #112	NORTHEAST SIDE OF W. COMMERCIAL STREET & PINE STREET INTERSECTION	1108.88'
BM #2	TOP NUT OF FIRE HYDRANT #113	NORTHWEST CORNER OF MINERAL STREET & PINE STREET INTERSECTION	1076.90'
BM #3	TOP NUT OF FIRE HYDRANT #109	SOUTHWEST CORNER OF WASHINGTON STREET & PINE STREET INTERSECTION	1091.42'



ENGINEER:
DELTA 3
 PROFESSIONAL, CIVIL, MECHANICAL & STRUCTURAL ENGINEERING-ARCHITECTURE
 GRANT WRITING-LAND DEVELOPMENT-PLANNING & CAD SERVICES
 875 SOUTH CHESTNUT STREET PHONE: (608) 348-5355
 WAUKESHA, WISCONSIN 53186
 888 JUDSON STREET PHONE: (563) 542-9005
 DUBUQUE, IOWA 52001

FOR QUESTIONS REGARDING THIS PROJECT, PLEASE CONTACT:
MR. MARK DIGMAN, P.E.
 DELTA 3 ENGINEERING, INC.
 TELEPHONE: (608) 348-5355

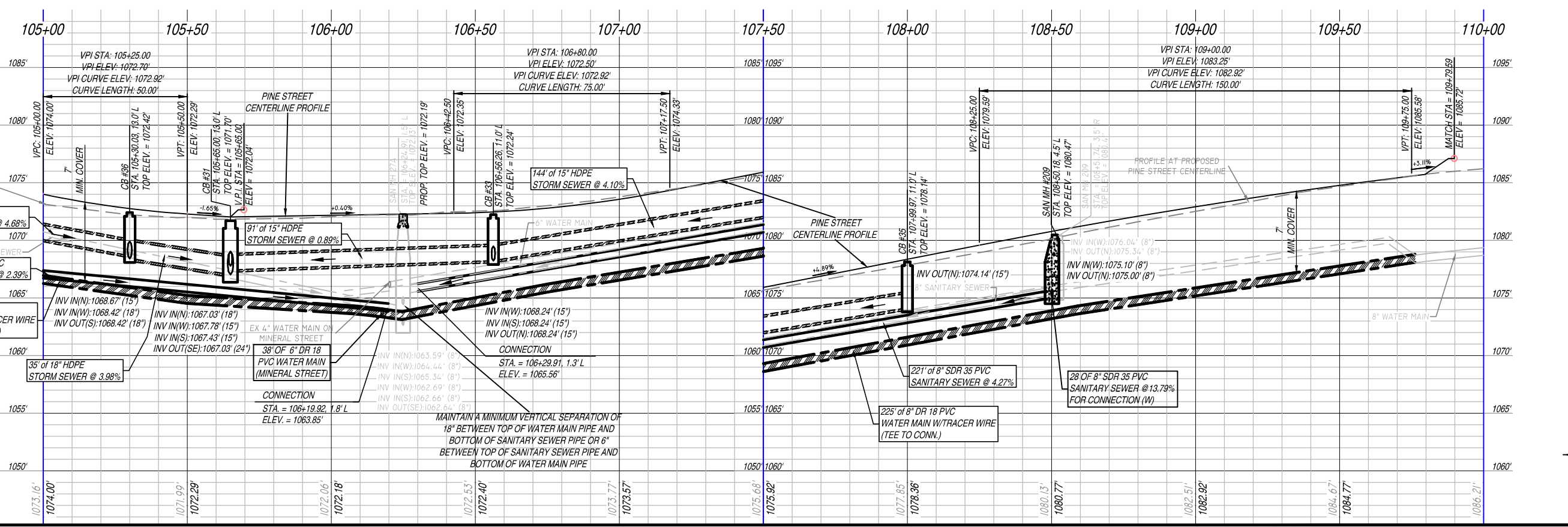
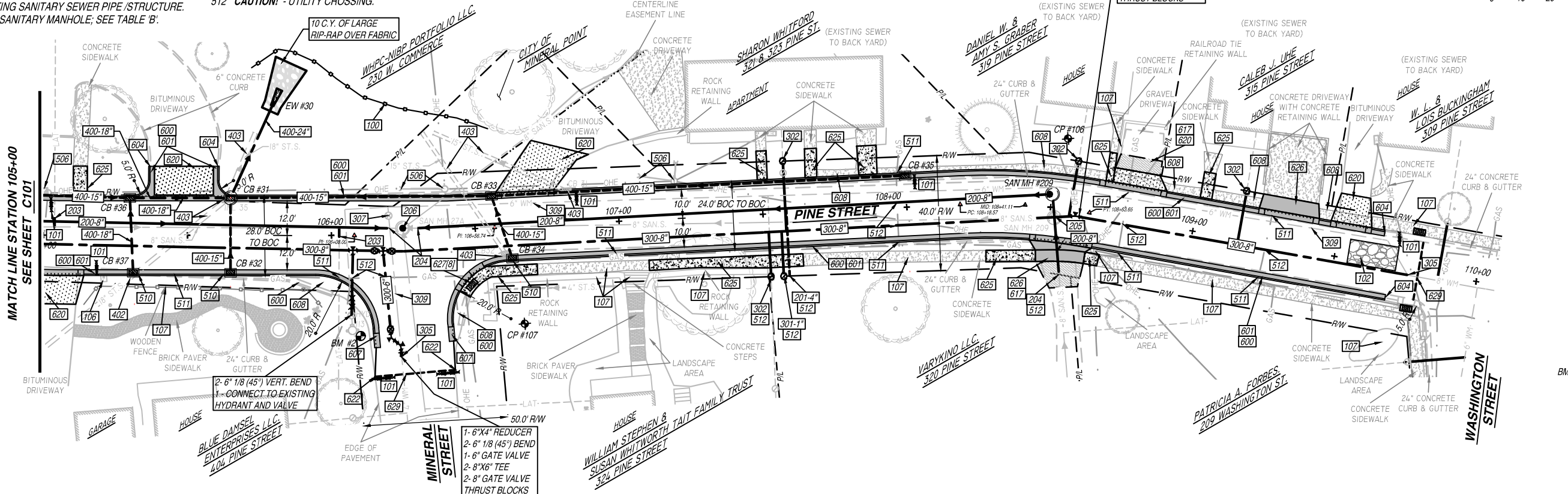
CONSENT STATEMENT
 ALL RIGHTS RESERVED, AND NO REPRODUCTION WITHOUT CONSENT. ALL DRAWINGS, SPECS, REPORTS, DATA, AND OTHER DOCUMENTS CONTAINED ON THIS PLAN SHEET ARE CREATED BY AND FOR DELTA 3 ENGINEERING AND THEIR CLIENTS' USE. REPRODUCTION OR DISTRIBUTION OF ANY CONTENT HEREIN, IN ANY FORM, WHETHER PRINTED, ELECTRONIC, OR OTHERWISE, REQUIRES THE EXPLICIT WRITTEN PERMISSION OF THE OWNER.

PROPOSED 2020 INFRASTRUCTURE IMPROVEMENTS - PINE STREET
 MINERAL POINT, WI
 PROJECT LOCATION: PINE STREET (W. COMMERCE ST. - WASHINGTON ST.)
 OWNER: CITY OF MINERAL POINT; 137 HIGH STREET, SUITE 1, MINERAL POINT, WI 53695

REVISIONS		
NO.	DATE	DESCRIPTION

FOR BID	
PROJECT NUMBER	D20-001
SHEET SCALE	HORIZ.-1"=20' VERT.-1"=5'
DRAWN BY	C. COYIER
DATE ISSUED	APRIL 27, 2020
SHEET DESC.	PLAN & PROFILE - PINE STREET

SHEET TITLE:
C102
 SHEET NUMBER # 04 of 15



EX. CL. ELEV.
 PROP. CL. ELEV.

EX. CL. ELEV.
 PROP. CL. ELEV.

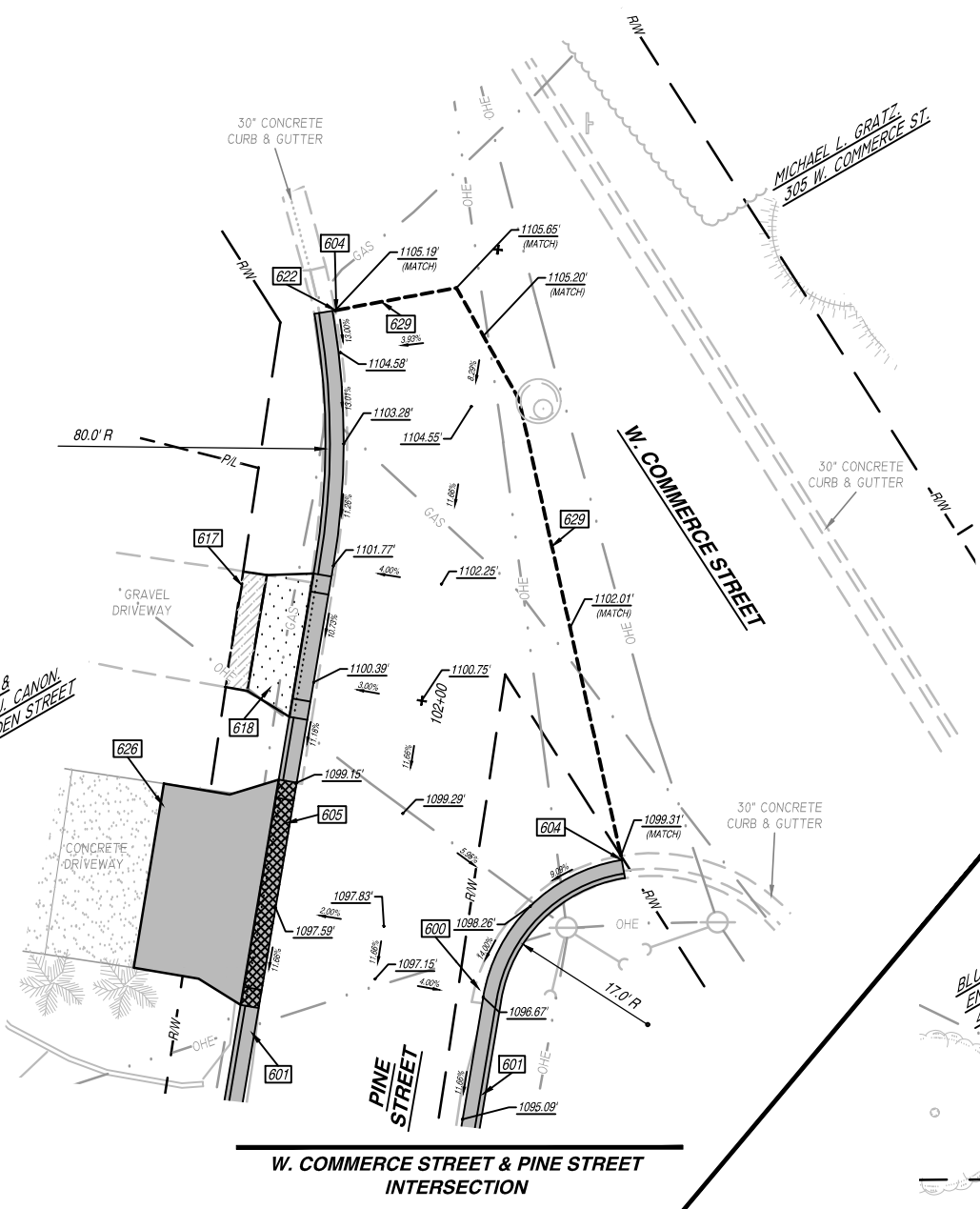
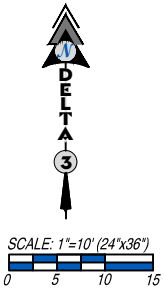
FOR QUESTIONS REGARDING THIS PROJECT, PLEASE CONTACT:
MR. MARK DIGMAN, P.E.
 DELTA 3 ENGINEERING, INC.
 TELEPHONE: (608) 348-5355

CONSENT STATEMENT
 ALL RIGHTS RESERVED. AND NO REPRODUCTION WITHOUT CONSENT. ALL DRAWINGS, SPECS, REPORTS, DATA, AND OTHER DOCUMENTS CONTAINED ON THIS PLAN SHEET ARE CREATED BY AND FOR DELTA 3 ENGINEERING AND THEIR CLIENTS' USE. REPRODUCTION OR DISTRIBUTION OF ANY CONTENT HEREIN, IN ANY FORM, WHETHER PRINTED, ELECTRONIC, OR OTHERWISE, REQUIRES THE EXPLICIT WRITTEN PERMISSION OF THE OWNER.

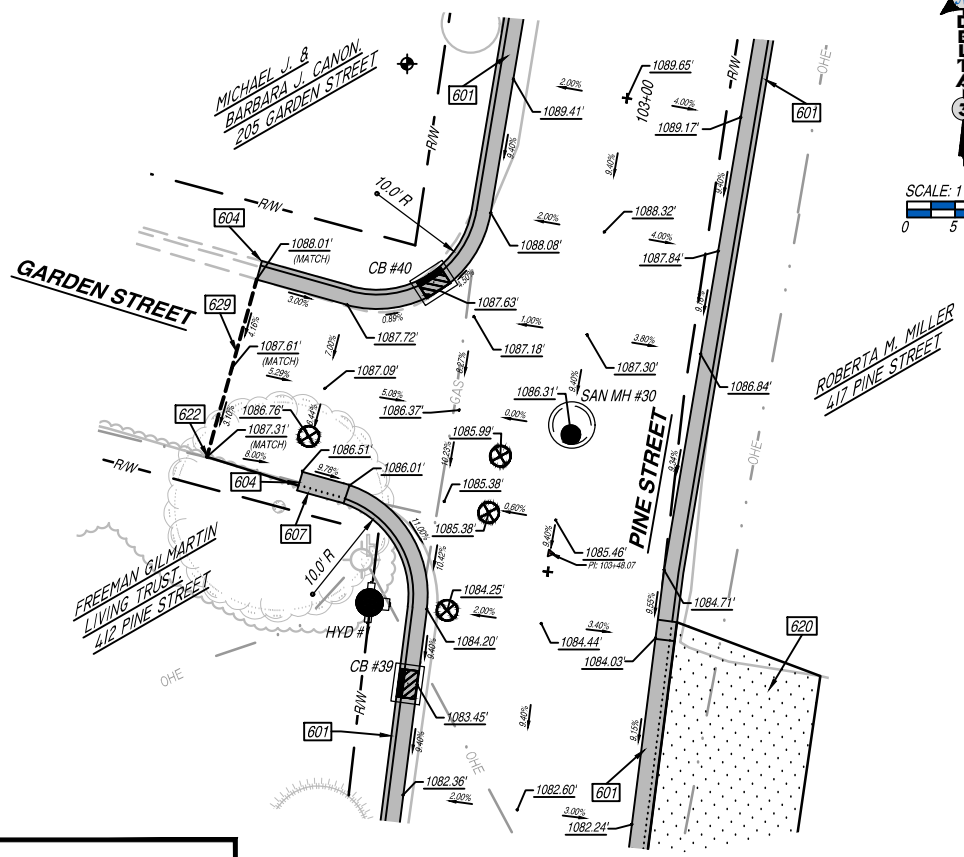
PROPOSED 2020 INFRASTRUCTURE IMPROVEMENTS - PINE STREET
 MINERAL POINT, WI
 PROJECT LOCATION: PINE STREET (W. COMMERCE ST. - WASHINGTON ST.)
 OWNER: CITY OF MINERAL POINT; 137' HIGH STREET, SUITE 1, MINERAL POINT, WI 53665

KEY NOTES 100 :

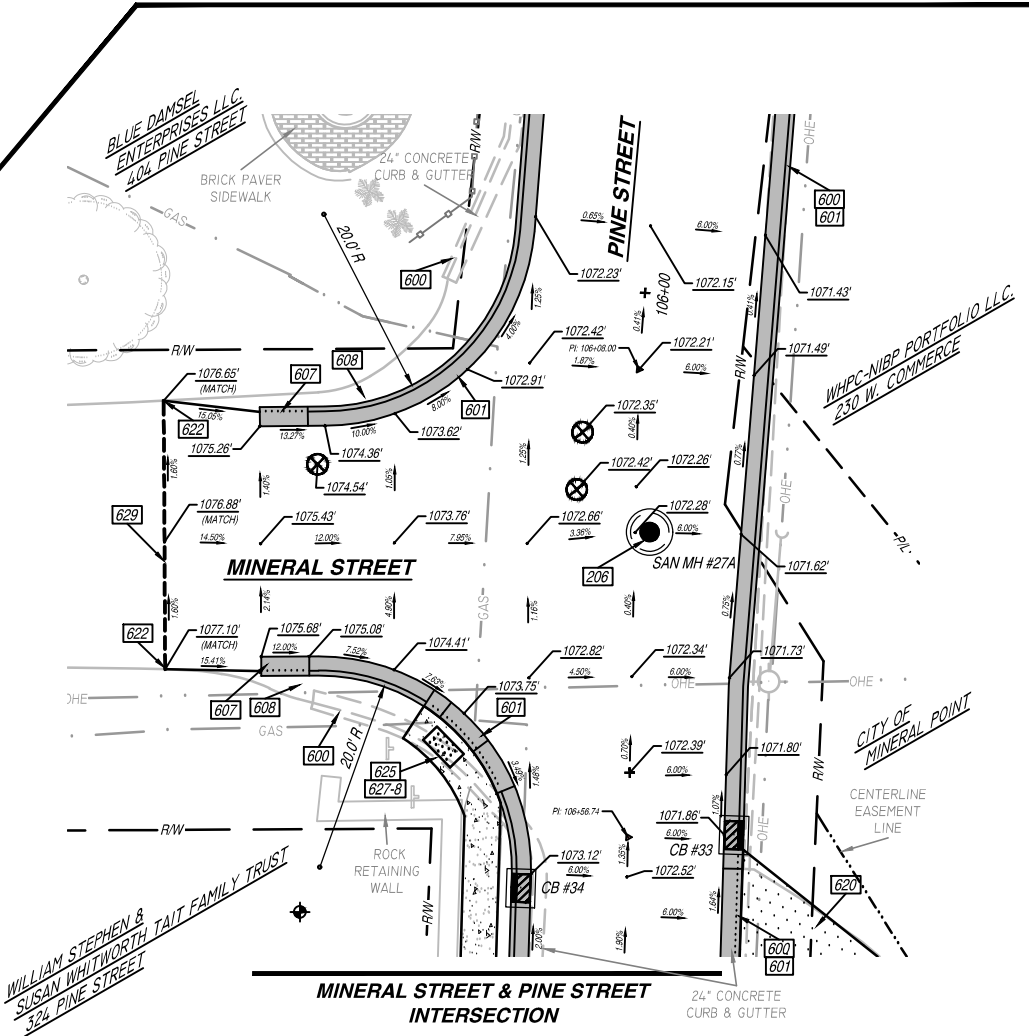
- 206 REHABILITATE SANITARY MANHOLE; SEE TABLE 'B'.
- 600 REMOVE EXISTING CURB & GUTTER.
- 601 PROPOSED 24" CONCRETE CURB & GUTTER.
- 604 MATCH TO EXISTING CURB & GUTTER.
- 605 PROVIDE TYPE 'X' CURB.
- 607 PROVIDE CURB TAPER.
- 608 REMOVE ASPHALT/CONCRETE/WALL/STEPS.
- 617 REMOVE & REPLACE GRAVEL DRIVEWAY.
- 618 REMOVE GRAVEL DRIVEWAY & REPLACE WITH BITUMINOUS DRIVEWAY/APRON.
- 620 REMOVE & REPLACE HMA PAVEMENT DRIVEWAY.
- 622 MATCH TO EXISTING EDGE PAVEMENT.
- 625 REMOVE & REPLACE 4" CONCRETE SIDEWALK.
- 626 REMOVE & REPLACE 6" CONCRETE SIDEWALK/DRIVEWAY.
- 627 PROPOSED HANDICAP RAMP WITH - D. WARN. FIELD (S.F.).
- 629 SAW CUT HMA PAVEMENT.



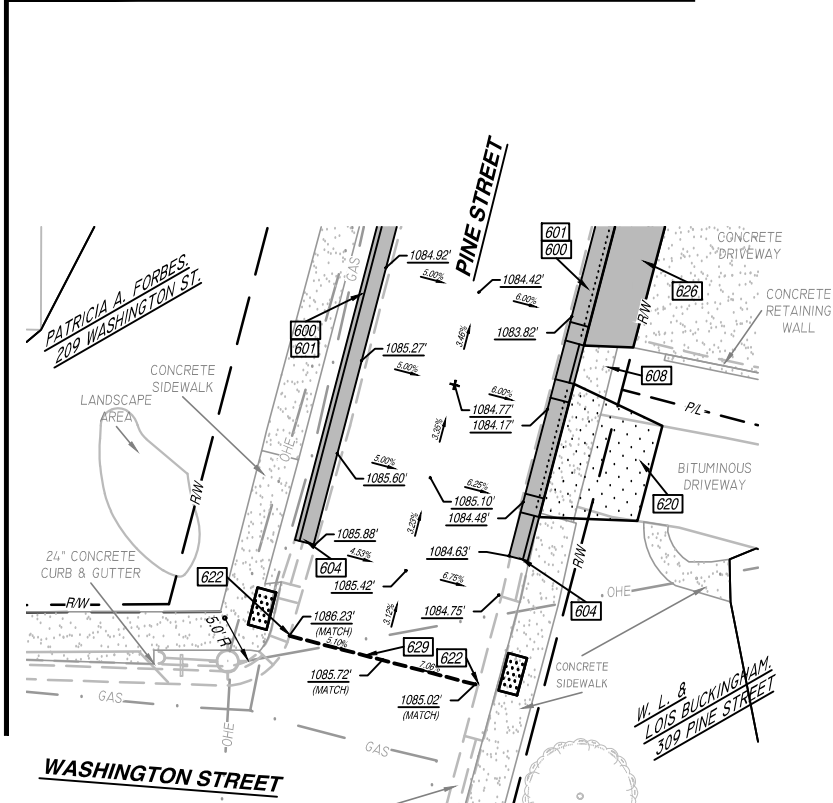
W. COMMERCE STREET & PINE STREET INTERSECTION



GARDEN STREET & PINE STREET INTERSECTION



MINERAL STREET & PINE STREET INTERSECTION

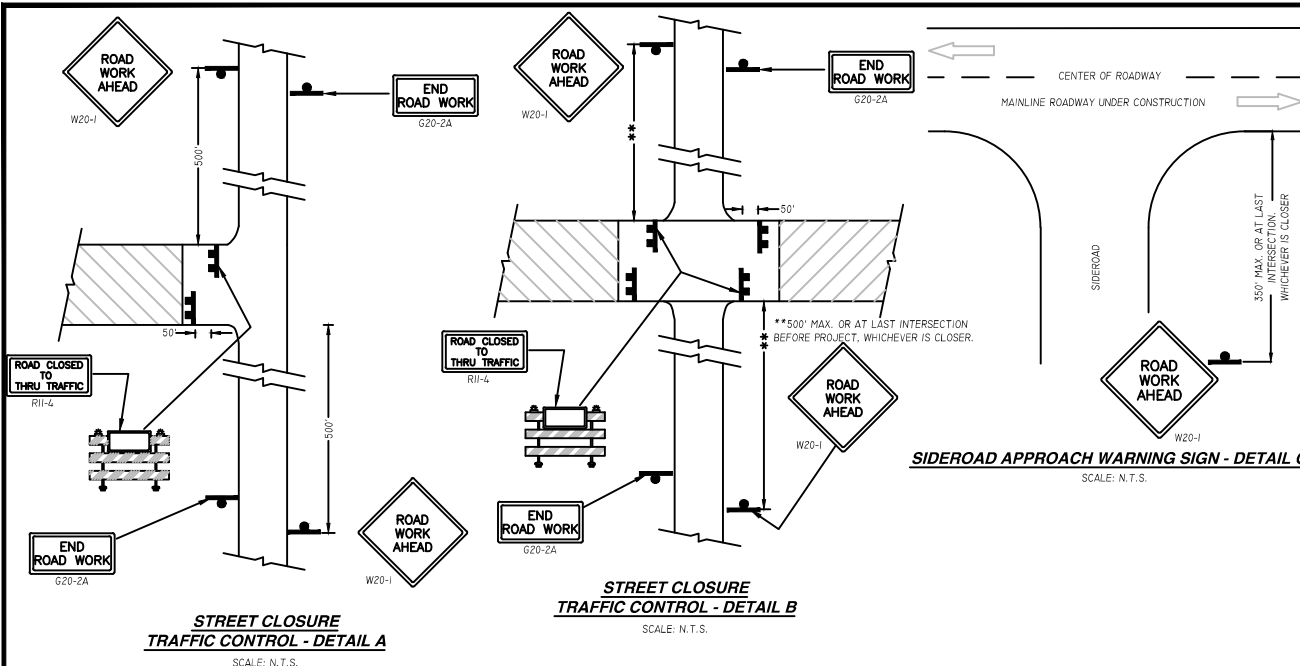


WASHINGTON STREET & PINE STREET INTERSECTION

REVISIONS		
NO.	DATE	DESCRIPTION

AS-BUILT: _____ BY: _____

FOR BID	
PROJECT NUMBER	D20-001
SHEET SCALE	SEE BAR SCALE
DRAWN BY	C. COYIER
DATE ISSUED	APRIL 27, 2020
SHEET DESC.	PVMT GRADING - PINE STREET



GENERAL NOTES - ADVANCED WARNING:

THE EXACT NUMBER, LOCATION, AND SPACING OF ALL SIGNS AND DEVICES (AND THE LOCATION OF ALL FLAGGERS) SHALL BE ADJUSTED TO FIT FIELD CONDITIONS AS DIRECTED BY THE ENGINEER.

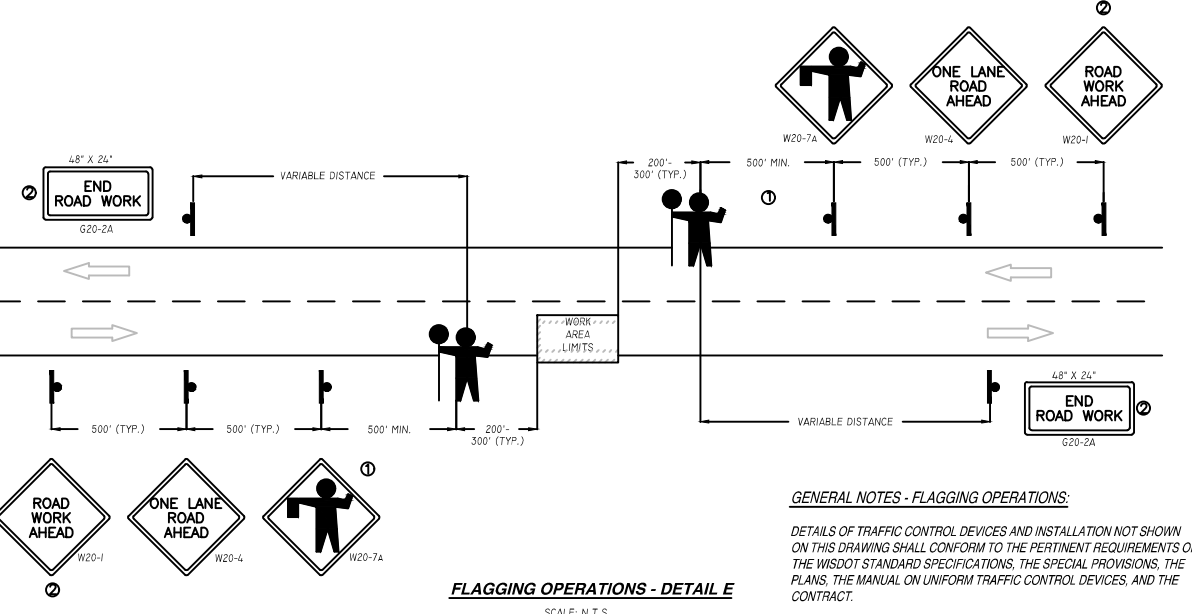
ALL SIGNS ARE 48" X 48" UNLESS OTHERWISE NOTED. IF NECESSARY DUE TO SPACE CONSTRAINTS, 36" X 36" SIGNS MAY BE USED INSTEAD, IF APPROVED BY ENGINEER.

SIGNS THAT WILL BE IN PLACE LESS THAN 7 CONTINUOUS DAYS AND NIGHTS MAY BE MOUNTED ON PORTABLE SUPPORTS.

THE SPACING BETWEEN TRAFFIC CONTROL SIGNS SHOULD BE ADJUSTED TO NOT CONFLICT WITH, AND SHOULD PROVIDE A DESIRABLE MINIMUM OF 200 FEET CLEARANCE TO EXISTING SIGNS THAT WILL REMAIN IN PLACE.

IF A "STOP" SIGN MUST BE REMOVED FOR A WORK OPERATION, A TEMPORARY "STOP" SIGN SHALL BE PLACED PRIOR TO THE SIGN REMOVAL, OR A FLAGGER SHALL BE PROVIDED UNTIL THE SIGN IS RE-ESTABLISHED.

★ THE THIRD W20-1 SIGN IS REQUIRED ONLY IF THERE IS AN INTERSECTION BETWEEN THE "ROAD WORK 500 FT" SIGN AND THE "WORK ZONE". ADJUST THE PLACEMENT OF THIS SIGN BASED ON INTERSECTION LOCATION AND OTHER FIELD CONDITIONS.



GENERAL NOTES - FLAGGING OPERATIONS:

DETAILS OF TRAFFIC CONTROL DEVICES AND INSTALLATION NOT SHOWN ON THIS DRAWING SHALL CONFORM TO THE PERTINENT REQUIREMENTS OF THE WISCONSIN STANDARD SPECIFICATIONS, THE SPECIAL PROVISIONS, THE PLANS, THE MANUAL ON UNIFORM TRAFFIC CONTROL DEVICES, AND THE CONTRACT.

THE EXACT NUMBER, LOCATION AND SPACING OF ALL SIGNS AND DEVICES (AND THE LOCATION OF ALL FLAGGERS) SHALL BE ADJUSTED TO FIT FIELD CONDITIONS AS DIRECTED BY THE ENGINEER.

THE FIRST ADVANCE WARNING SIGN SHOULD TYPICALLY BE LOCATED IN ADVANCE OF THE ANTICIPATED TRAFFIC BACKUP OR QUEUE.

WHEN A SIDE ROAD OR RAMP INTERSECTS THE FACILITY ON WHICH THE WORK IS BEING PERFORMED, ADDITIONAL TRAFFIC CONTROLS SHALL BE PROVIDED AS SPECIFIED IN THE PLANS AND/OR THE SPECIFICATIONS OR AS DIRECTED BY THE ENGINEER.

FLAGGERS SHALL BE IN SIGHT OF EACH OTHER OR IN DIRECT COMMUNICATION AT ALL TIMES. THEY SHALL BE EQUIPPED WITH STOP/SLOW PADDLES FASTENED ON SUPPORT STAFFS. WHEN THE FLAGGING OPERATION IS NOT IN EFFECT, THE "FLAGGER AHEAD", THE "ROAD WORK AHEAD" AND THE "ONE LANE ROAD AHEAD" SIGNS SHALL BE COVERED OR REMOVED, AND THE HIGHWAY RESTORED TO NORMAL OPERATION.

ALL SIGNS ARE 48" X 48" UNLESS OTHERWISE NOTED.

ENGINEER:

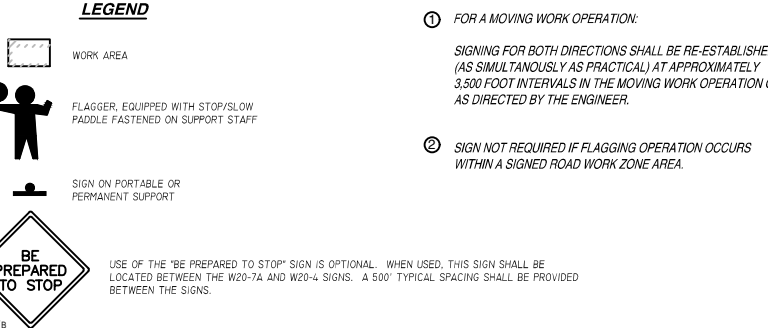
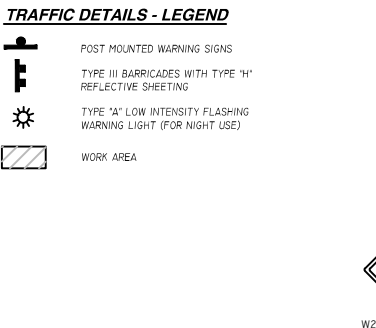
DELTA 3
DESIGN-BUILD CONTRACT
 PROFESSIONAL, CIVIL, MUNICIPAL, & STRUCTURAL ENGINEERING-ARCHITECTURE
 GRADE WORKING-LAND DEVELOPMENT-PLANNING & CAD SERVICES
 875 SOUTH CHESTNUT STREET PLATEVILLE, WISCONSIN 53181 PHONE: (608) 348-5355
 888 JOHNSON STREET DUBUQUE, IOWA 52001 PHONE: (563) 542-9005

FOR QUESTIONS REGARDING THIS PROJECT, PLEASE CONTACT:

MR. MARK DIGMAN, P.E.
 DELTA 3 ENGINEERING, INC.
 TELEPHONE: (608) 348-5355

CONSENT STATEMENT

ALL RIGHTS RESERVED, AND NO REPRODUCTION WITHOUT CONSENT. ALL DRAWINGS, SPECS, REPORTS, DATA, AND OTHER DOCUMENTS CONTAINED ON THIS PLAN SHEET ARE CREATED BY AND FOR DELTA 3 ENGINEERING AND THEIR CLIENTS' USE. USE, REPRODUCTION, OR DISTRIBUTION OF ANY CONTENT HEREIN, IN ANY FORM, WHETHER PRINTED, ELECTRONIC, OR OTHERWISE, REQUIRES THE EXPLICIT WRITTEN PERMISSION OF THE OWNER.



GENERAL NOTES - BARRICADE:

DETAILS OF TRAFFIC CONTROL DEVICES AND THEIR LOCATION NOT SHOWN ON THIS DRAWING SHALL CONFORM TO THE PERTINENT REQUIREMENTS OF THE WISCONSIN MANUAL OF TRAFFIC CONTROL DEVICES, THE PLANS, WISDOT STANDARD SPECIFICATIONS, THE SPECIAL PROVISIONS, AND THE CONTRACT.

SIGN AND BARRICADE LOCATIONS MAY BE ADJUSTED IN THE FIELD AS DIRECTED BY THE ENGINEER. ANY EXISTING TRAFFIC SIGNS THAT CONFLICT WITH THIS WORK SHALL BE COVERED AS DIRECTED BY THE ENGINEER. ALL "STOP" OR OTHER REGULATORY SIGNS ON THE SIDE ROADS SHALL NOT BE DISTURBED, EXCEPT WHEN NECESSARY TO COMPLETE THE WORK. THE SIGNS MUST THEN BE IMMEDIATELY RE-ESTABLISHED.

ALL TYPE III BARRICADES SHALL HAVE RAILS REFLECTORIZED ON BOTH FACES. STRIPES SHALL BE PROPERLY SLOPED DOWN TOWARD THE TRAFFIC SIDE OR AS SHOWN IN THE LANE CLOSURE BARRICADE DETAIL FOR FULL ROAD CLOSURES. TYPE "A" LOW INTENSITY FLASHING WARNING LIGHTS SHALL BE VISIBLE ON BOTH SIDES OF THE BARRICADE.

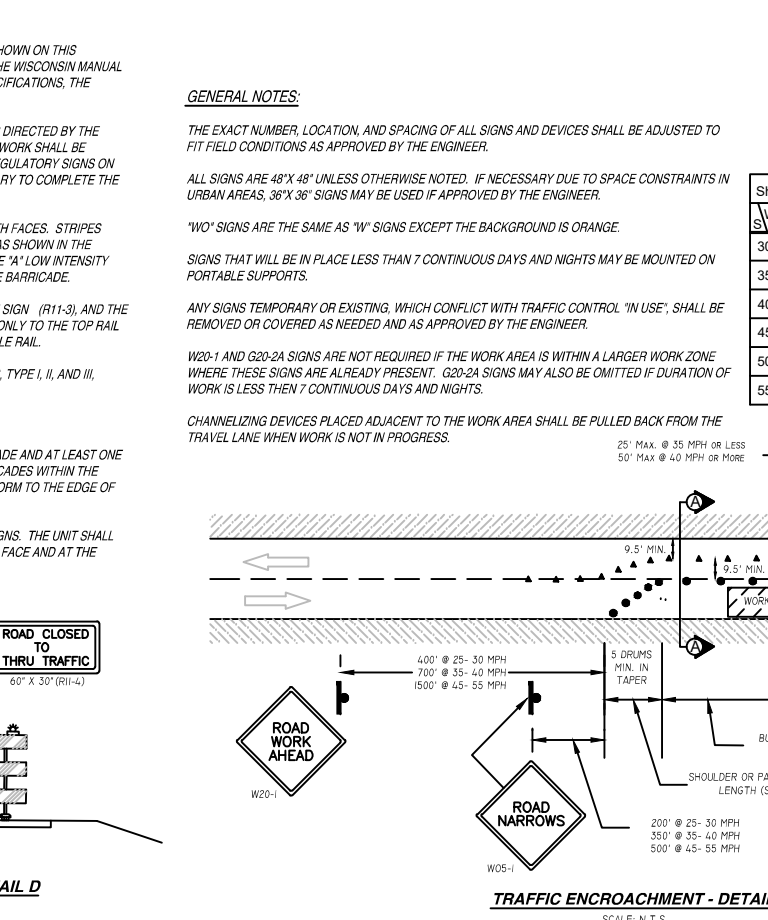
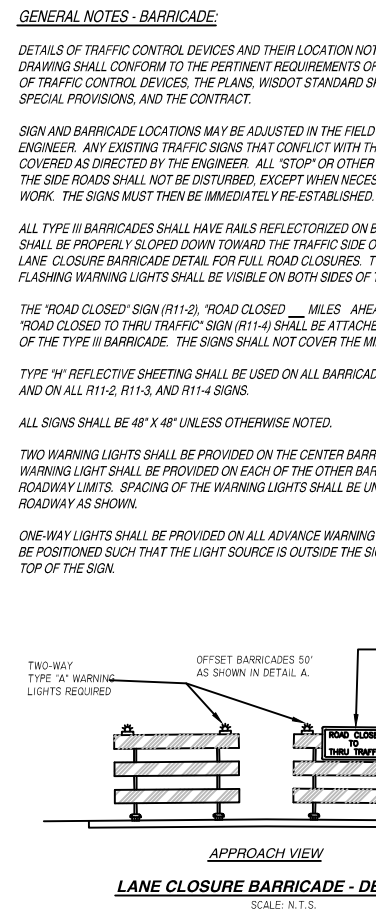
THE "ROAD CLOSED" SIGN (R11-2), "ROAD CLOSED MILES AHEAD" SIGN (R11-3), AND THE "ROAD CLOSED TO THRU TRAFFIC" SIGN (R11-4) SHALL BE ATTACHED ONLY TO THE TOP RAIL OF THE TYPE III BARRICADE. THE SIGNS SHALL NOT COVER THE MIDDLE RAIL.

TYPE "H" REFLECTIVE SHEETING SHALL BE USED ON ALL BARRICADES, TYPE I, II, AND III, AND ON ALL R11-2, R11-3, AND R11-4 SIGNS.

ALL SIGNS SHALL BE 48" X 48" UNLESS OTHERWISE NOTED.

TWO WARNING LIGHTS SHALL BE PROVIDED ON THE CENTER BARRICADE AND AT LEAST ONE WARNING LIGHT SHALL BE PROVIDED ON EACH OF THE OTHER BARRICADES WITHIN THE ROADWAY LIMITS. SPACING OF THE WARNING LIGHTS SHALL BE UNIFORM TO THE EDGE OF ROADWAY AS SHOWN.

ONE-WAY LIGHTS SHALL BE PROVIDED ON ALL ADVANCE WARNING SIGNS. THE UNIT SHALL BE POSITIONED SUCH THAT THE LIGHT SOURCE IS OUTSIDE THE SIGN FACE AND AT THE TOP OF THE SIGN.

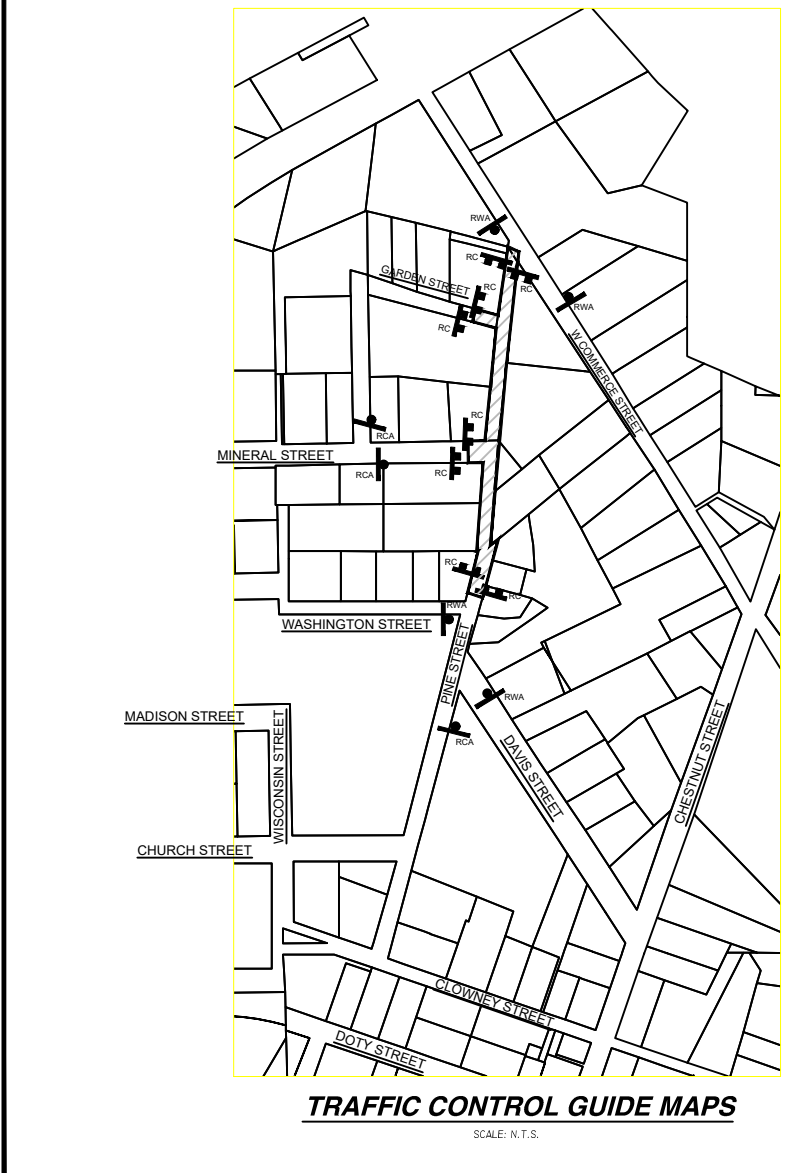


GENERAL NOTES - ENCROACHMENT:

TYPE "H" REFLECTIVE SHEETING SHALL BE USED ON ALL BARRICADES, TYPE I, II AND III, AND ON ALL R11-2, R11-3 AND R11-4 SIGNS.

ALL SIGNS SHALL BE 48" X 48" UNLESS OTHERWISE NOTED BELOW.

R11-2, "ROAD CLOSED" SIGNS SHALL BE 48" X 30"
 R11-3, AND R11-4 SIGNS SHALL BE 60" X 30".
 G20-2A SIGNS SHALL BE 48" X 24".



1. THE SIGN LOCATIONS SHOWN ARE APPROXIMATE LOCATIONS. THE CONTRACTOR SHALL INSTALL TRAFFIC CONTROL SIGNS PER WISCONSIN DEPARTMENT OF TRANSPORTATION (WISDOT) STANDARDS AND THE MANUAL OF UNIFORM TRAFFIC CONTROL DEVICES (MUTCD).
2. THE SIGNS SHOWN ARE THE MINIMUM TRAFFIC CONTROL THAT WILL BE REQUIRED FOR THE PROJECT. THE CONTRACTOR SHALL BE RESPONSIBLE FOR PROVIDING ADDITIONAL TRAFFIC CONTROL MEASURES DURING CONSTRUCTION TO MEET THE STANDARDS OF THE WISCONSIN DOT AND THE MANUAL OF UNIFORM TRAFFIC CONTROL DEVICES, AND AS DIRECTED BY THE PROJECT ENGINEER.

PROPOSED 2020 INFRASTRUCTURE IMPROVEMENTS - PINE STREET

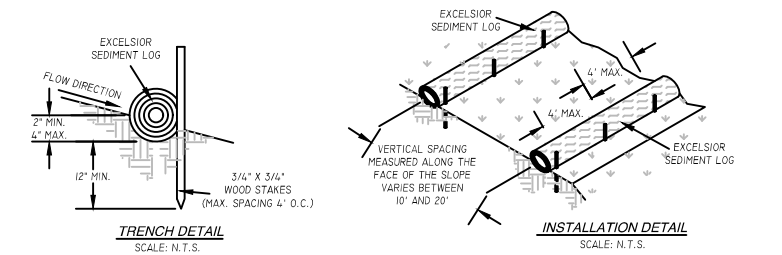
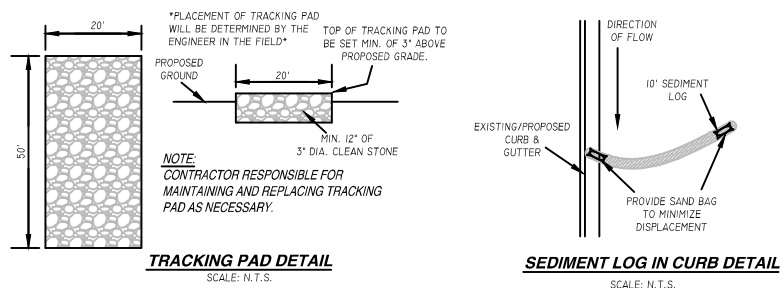
MINERAL POINT, WI

PROJECT LOCATION: PINE STREET (W. COMMERCE ST. - WASHINGTON ST.)
 OWNER: CITY OF MINERAL POINT, 137 HIGH STREET, SUITE 1, MINERAL POINT, WI 53665

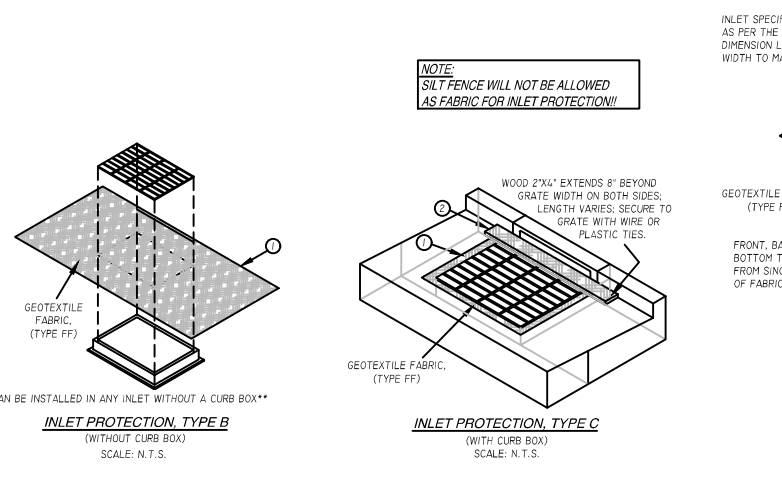
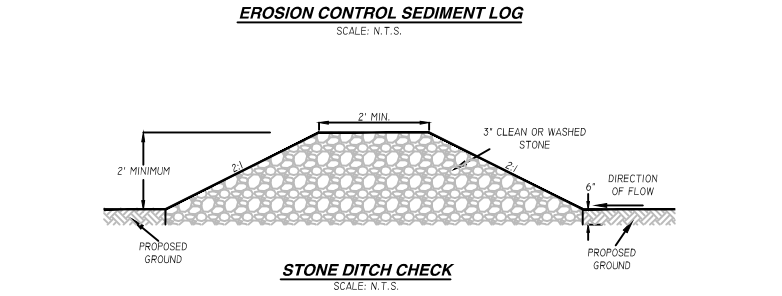
REVISIONS		
NO.	DATE	DESCRIPTION

AS-BUILT: _____ BY: _____

FOR BID	
PROJECT NUMBER	D20-001
SHEET NUMBER	NOT TO SCALE
DRAWN BY	C. COVIER
DATE ISSUED	APRIL 27, 2020
SHEET DESC.	DETAILS - TRAFFIC CONTROL, MAP & NOTES



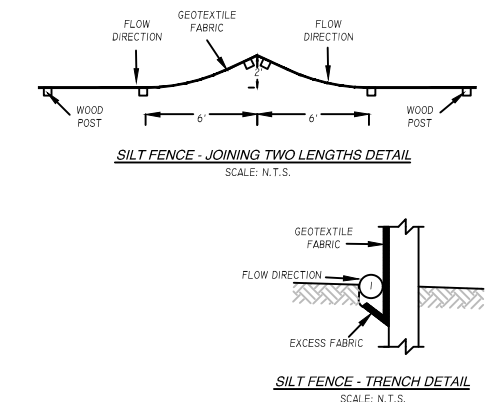
- TYPE 1 = 20' ROLL (HEAVY DUTY CONCENTRATED FLOW)
 TYPE 2 = 12' ROLL (HEAVY CONCENTRATED FLOW)
 TYPE 3 = 9' ROLL (MILD CONCENTRATED FLOW)
 TYPE 4 = 6' ROLL (LOW CONCENTRATED FLOW)



INSTALLATION NOTES:

TYPE B & C:
TRIM EXCESS FABRIC IN THE FLOW TO WITHIN 3" OF GRATE. THE CONTRACTOR SHALL DEMONSTRATE A METHOD OF MAINTENANCE, USING A SEWING FLAP, HAND HOLDS OR OTHER METHOD TO PREVENT ACCUMULATED SEDIMENT FROM ENTERING THE INLET.

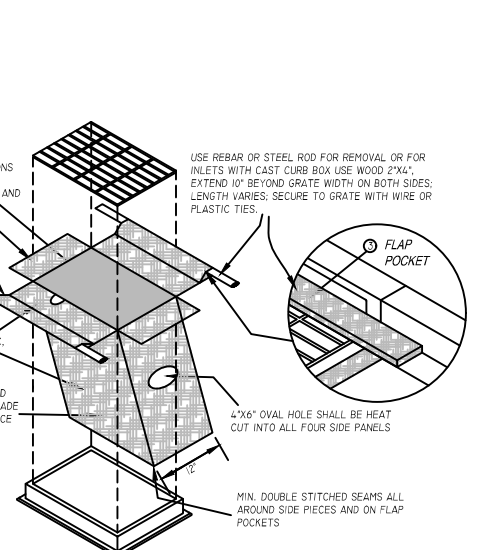
TYPE D:
DO NOT INSTALL PROTECTION TYPE D IN INLETS SHALLOWER THAN 30", MEASURED FROM THE BOTTOM OF THE INLET TO THE TOP OF THE GRATE. TRIM EXCESS FABRIC IN THE FLOW LINE TO WITHIN 3" OF THE GRATE. THE INSTALLED BAG SHALL HAVE A MINIMUM SIDE CLEARANCE BETWEEN THE INLET WALLS AND THE BAG, MEASURED AT THE BOTTOM OF THE OVERFLOW HOLES, OF 3", WHERE NECESSARY. THE CONTRACTOR SHALL CINCH THE BAG, USING PLASTIC ZIP TIES, TO ACHIEVE THE 3" CLEARANCE. THE TIES SHALL BE PLACED AT A MAXIMUM OF 4" FROM THE BOTTOM OF THE BAG.



GENERAL NOTES- SILT FENCE:
 DETAILS OF CONSTRUCTION NOT SHOWN ON THIS DRAWING SHALL CONFORM TO THE PERTINENT REQUIREMENTS OF THE WISDOT STANDARD SPECIFICATIONS FOR HIGHWAY AND STRUCTURE CONSTRUCTION (MOST CURRENT EDITION) AND THE APPLICABLE SPECIAL PROVISIONS.

① TRENCH SHALL BE A MINIMUM OF 4" WIDE & 6" DEEP TO BURY AND ANCHOR THE GEOTEXTILE FABRIC. FOLD MATERIAL TO FIT TRENCH AND BACKFILL & COMPACT TRENCH WITH EXCAVATED SOIL.

② WOOD POST SHALL BE A MINIMUM SIZE OF 1-1/8" X 1-1/8" OF OAK OR HICKORY.



GENERAL NOTES- SILT FENCE:
 DETAILS OF CONSTRUCTION NOT SHOWN ON THIS DRAWING SHALL CONFORM TO THE PERTINENT REQUIREMENTS OF THE WISDOT STANDARD SPECIFICATIONS FOR HIGHWAY AND STRUCTURE CONSTRUCTION (MOST CURRENT EDITION) AND THE APPLICABLE SPECIAL PROVISIONS.

GENERAL NOTES- INLET PROTECTION:

INLET PROTECTION DEVICES SHALL BE MAINTAINED OR REPLACED AT THE DIRECTION OF THE ENGINEER.

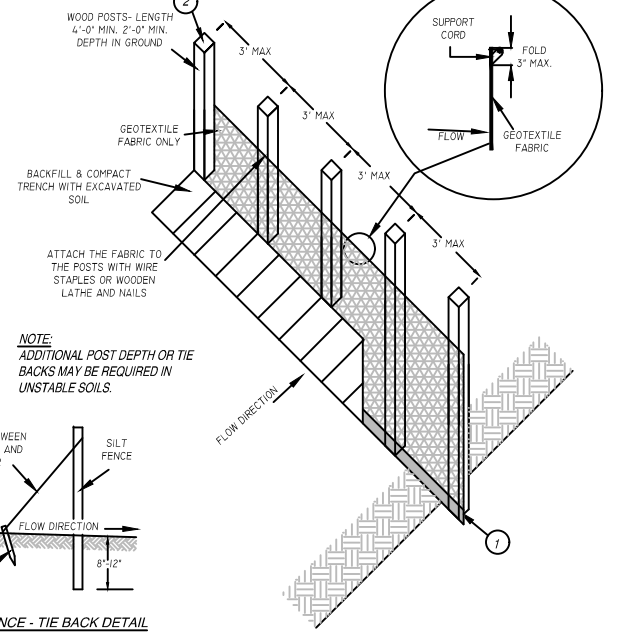
MANUFACTURED ALTERNATIVES APPROVED AND LISTED ON THE DEPARTMENTS EROSION CONTROL PRODUCT ACCEPTABILITY LIST MAY BE SUBSTITUTED.

WHEN REMOVING OR MAINTAINING INLET PROTECTION, CARE SHALL BE TAKEN SO THAT THE SEDIMENT TRAPPED ON THE GEOTEXTILE FABRIC DOES NOT FALL INTO THE INLET, ANY MATERIAL FALLING INTO THE INLET SHALL BE REMOVED IMMEDIATELY.

① FINISHED SIZE, INCLUDING FLAP POCKETS WHERE REQUIRED, SHALL EXTEND A MIN. OF 10" AROUND THE PERIMETER TO FACILITATE MAINTENANCE OR REMOVAL.

② FOR INLET PROTECTION, TYPE C (WITH CURB BOX), AN ADDITIONAL 18" OF FABRIC IS WRAPPED AROUND THE WOOD AND SECURED WITH STAPLES. THE WOOD SHALL NOT BLOCK THE ENTIRE HEIGHT OF THE CURB BOX OPENING.

③ FLAP POCKETS SHALL BE LARGE ENOUGH TO ACCEPT WOOD 2"X4".



EROSION MATTING NOTES:

1. PREPARE SOIL BEFORE INSTALLING BLANKETS, INCLUDING APPLICATION OF FERTILIZER AND MULCH AND SEED.

2. BEGIN AT THE TOP OF THE SHOULDER (OR CHANNEL) BY ANCHORING THE BLANKET IN A 6" DEEP X 6" WIDE TRENCH. BACKFILL AND COMPACT THE TRENCH AFTER STAPLING.

3. ROLL THE BLANKETS DOWN (STARTING AT DOWNSTREAM PROCEEDING UPSTREAM) HORIZONTALLY ACROSS THE SLOPE.

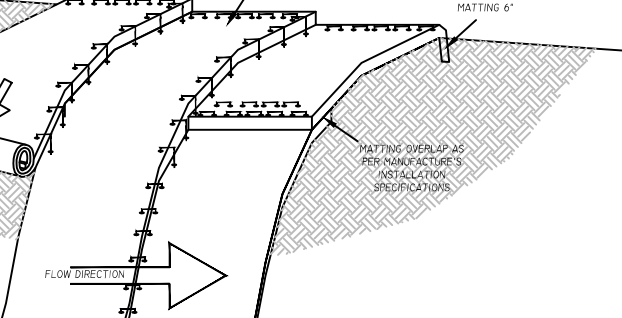
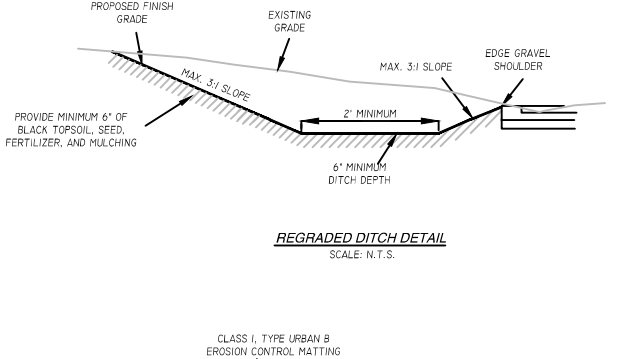
4. THE EDGES OF PARALLEL BLANKETS MUST BE STAPLED WITH MANUFACTURER'S RECOMMENDED OVERLAP.

5. WHEN BLANKETS MUST BE SPLICED DOWN THE SLOPE, PLACE BLANKETS END OVER END (SHINGLE STYLE) WITH AN OVERLAP. USE A DOUBLE ROW OF STAGGERED STAPLES 4" APART TO SECURE BLANKETS.

6. IN HIGH CHANNEL APPLICATIONS, A STAPLE SLOT IS RECOMMENDED AT 30 TO 40 FOOT INTERVALS. USE A ROW OF STAPLES 4" APART OVER THE ENTIRE WIDTH OF THE CHANNEL. PLACE A SECOND ROW 4" BELOW THE FIRST ROW IN A STAGGERED PATTERN.

7. THE TERMINAL END OF THE BLANKETS MUST BE ANCHORED IN A 6" DEEP X 6" WIDE TRENCH. BACKFILL AND COMPACT THE TRENCH AFTER STAPLING.

EROSION MATTING - SLOPE INSTALLATION DETAIL
SCALE: N.T.S.



GENERAL NOTES- REGRADING:

REGRADING SHALL BE PERFORMED TO THE DESIGN GRADE. THE SOIL SHALL BE STABILIZED WITH TURF GRASS OR OTHER PERMANENT VEGETATION. THE PRIMARY TECHNIQUE TO BE USED AT THIS PROJECT FOR STABILIZING SITE SOIL WILL BE TO PROVIDE A PROTECTIVE COVER OF TURF GRASS OR PAVEMENT.

EROSION CONTROL NOTES:

- GENERAL EROSION NOTES AND MAINTENANCE MEASURES ARE ILLUSTRATED ON THE PLAN & PROFILE SHEETS. AFTER AWARD OF THE CONTRACT, THE GENERAL CONTRACTOR SHALL INSTALL ALL BEST MANAGEMENT PRACTICES AS SHOWN ON THE PLAN & PROFILE SHEETS. ONCE INSTALLED, THE GENERAL CONTRACTOR SHALL CONTACT DELTA 3 ENGINEERING, INC. (808-348-5355). ONCE NOTIFIED DELTA 3 ENGINEERING, INC. WILL VISIT THE SITE WITHIN 5 DAYS TO REVIEW THE SITE WITH THE GENERAL CONTRACTORS SUPERINTENDENT. UPON VISITING THE SITE, THE CONSULTING ENGINEER AND THE GENERAL CONTRACTORS SUPERINTENDENT WILL REVIEW THE SITE FOR COMPLIANCE WITH THE EROSION CONTROL MEASURES. IF AND WHEN ALL BEST MANAGEMENT PRACTICES REQUIRED TO COMMENCE SITE CONSTRUCTION ARE IN PLACE, THE CONSULTING ENGINEER AND PROJECT SUPERINTENDENT WILL SIGN AND CERTIFY THIS FACT. THIS REVIEW AND CERTIFICATION SHALL TAKE PLACE PRIOR TO THE REQUIRED PRE-CONSTRUCTION MEETING. THE SITE SUPERINTENDENT SHALL MAINTAIN AN AS-BUILT COPY OF THE EROSION CONTROL MEASURES ON SITE AT ALL TIMES. ANY ACTIVITIES INVOLVING INSTALLATION OF BEST MANAGEMENT PRACTICES SHALL BE INDICATED ON THE AS-BUILT PLAN WITH AN INSTALLED TIME AND DATE. RECORDED INFORMATION SHALL BE PERMANENTLY PLACED ON THE SITE MAP INCLUDING ANY CHANGES MADE TO THE BEST MANAGEMENT PRACTICES. IF THE SITE MAP BECOMES HARD TO READ, THE INITIAL DRAWING SHALL BE SAVED AND A CLEAN COPY SHALL BE ISSUED IN ORDER TO CONTINUE RECORDING ANY ON-SITE EROSION CONTROL ACTIVITY.
- A COMPLETE COPY OF ALL INSPECTION REPORTS, PLAN REVISIONS, ETC., MUST BE RETAINED AT THE PROJECT SITE AT ALL TIMES DURING DURATION OF THE PROJECT AND KEPT IN THE PERMANENT PROJECT RECORDS FOR AT LEAST FIVE YEARS FOLLOWING SUBMISSION OF THE NOTICE OF TERMINATION (NOT).
- THE GENERAL CONTRACTOR SHALL BE RESPONSIBLE FOR INSURING THAT ALL SUB-CONTRACTORS INVOLVED IN GROUND DISTURBING ACTIVITY COMPLY WITH THE EROSION CONTROL REQUIREMENTS.
- DAILY INSPECTIONS BY THE PROJECT SUPERINTENDENT AND MONTHLY INSPECTIONS BY THE OWNER'S CONSTRUCTION MANAGER MUST BE MADE TO DETERMINE THE EFFECTIVENESS OF THE EROSION CONTROL MEASURES. THE GENERAL CONTRACTOR IS TO INSPECT EROSION AND SEDIMENT CONTROLS WITHIN 24 HOURS AFTER A RAINFALL EVENT OF 0.5 INCHES OR GREATER. THE GENERAL CONTRACTOR SHALL BE RESPONSIBLE TO REPAIR OR REPLACE EROSION AND SEDIMENT CONTROL BEST MANAGEMENT PRACTICES AS NECESSARY WITHIN 24 HOURS OF INSPECTION.
- ONCE THE SITE REACHES FINAL STABILIZATION, ALL PERMANENT EROSION AND SEDIMENTATION CONTROLS ARE INSTALLED AND ALL TEMPORARY EROSION AND SEDIMENTATION CONTROLS ARE REMOVED, THE GENERAL CONTRACTOR AND OWNER MUST COMPLETE A FINAL SITE INSPECTION. UPON APPROVAL BY OWNER, THE OWNER AND GENERAL CONTRACTOR, AS APPLICABLE, MUST COMPLETE AND SUBMIT A NOTICE OF TERMINATION (NOT) FORM TO BE SUBMITTED TO THE WISCONSIN DEPARTMENT OF NATURAL RESOURCES.
- A RECORD OF THE DATES WHEN MAJOR GROUND-DISTURBING ACTIVITIES OCCUR, WHEN CONSTRUCTION ACTIVITIES TEMPORARILY OR PERMANENTLY CEASE ON A PORTION OF THE SITE, AND WHEN STABILIZATION MEASURES ARE INITIATED MUST BE MAINTAINED UNTIL THE NOT IS FILED. CONTROLS MUST BE IN PLACE DOWN GRADIENT OF GROUND-DISTURBING ACTIVITIES PRIOR TO THE COMMENCEMENT OF CONSTRUCTION.
- A LOG OF ALL INSPECTIONS BY FEDERAL, STATE, OR LOCAL STORM WATER OR OTHER ENVIRONMENTAL AGENCIES SHALL BE KEPT BY THE GENERAL CONTRACTOR. THE LOG SHALL INCLUDE THE DATE AND TIME OF VISIT AND WHETHER A REPORT WAS ISSUED OR WILL BE ISSUED AS A RESULT OF THE INSPECTION. ANY REPORTS ISSUED SHALL BE FAXED TO THE DELTA 3 ENGINEERING INC. 808-348-5455 (FAX).
- SOIL STABILIZATION - THE PURPOSE OF SOIL STABILIZATION IS TO PREVENT SOIL FROM LEAVING THE SITE. IN THE NATURAL CONDITION, SOIL IS STABILIZED BY NATIVE VEGETATION. THE PRIMARY TECHNIQUE TO BE USED AT THIS PROJECT FOR STABILIZING SITE SOIL WILL BE TO PROVIDE A PROTECTIVE COVER OF TURF GRASS OR PAVEMENT.
 - (A) TEMPORARY SEEDING OR STABILIZATION - AREAS MAY BE STABILIZED TEMPORARILY WITH THE USE OF FAST-GERMINATING ANNUAL SEED, STRAW MULCH, WOOD CELLULOSE FIBERS, TACKIFIERS, NETTING OR BLANKET, WHERE CONDITIONS ARE FAVORABLE. AREAS SHALL BE TEMPORARILY STABILIZED WITHIN 7 DAYS AFTER CONSTRUCTION ACTIVITY CEASES. ALL DISTURBED GROUND WHERE THERE WILL NOT BE CONSTRUCTION FOR LONGER THAN 14 DAYS MUST BE SEEDING OR OTHERWISE STABILIZED.
 - (B) PERMANENT SEEDING OR SOO - ALL AREAS AT FINAL GRADE MUST BE SEEDING OR SODDING WITHIN 3 DAYS AFTER COMPLETION OF THE MAJOR CONSTRUCTION ACTIVITY. EXCEPT FOR SMALL LEVEL SPOTS, SEEDING AREAS SHOULD GENERALLY BE PROTECTED WITH MULCH. ALL AREAS TO BE SEEDING WILL ALSO HAVE TOPSOIL AND OTHER AMENDMENTS AS STATED IN WISDOT SPECIFICATION SECTION 02800-PLANTING.
 - (C) MULCHING - ALL AREAS THAT ARE TEMPORARY OR PERMANENT SEEDING SHALL BE MULCHED ACCORDING TO SECTION 627 - MULCHING OF THE WISDOT STANDARD SPECIFICATIONS FOR HIGHWAY CONSTRUCTION. ALL MULCH IS TO BE ANCHORED UTILIZING METHOD A, B, OR C.
 - (D) EROSION CONTROL MATTING - FOR ANY SLOPES GREATER THAN 3:1, EROSION MATTING IS REQUIRED.
- STRUCTURAL CONTROLS - BEFORE ANY MAJOR GRADING ACTIVITIES, THE FOLLOWING BEST MANAGEMENT PRACTICES SHALL BE INSTALLED ON THE PROPOSED SITE - SILT FENCE, TEMPORARY TRACKING PAD, AND STORM SEWER INLET PROTECTION.
 - (A) SILT FENCE - SILT FENCE IS A SYNTHETIC PERMEABLE WOVEN OR NON-WOVEN FABRIC TYPICALLY INCORPORATING WOODEN OR METAL SUPPORT STAKES AT INTERVALS SUFFICIENT TO SUPPORT THE FENCE, WATER, AND SEDIMENT RETAINED BY THE FENCE. SILT FENCE CAN ALSO BE INSTALLED WITH A WIRE FENCE BACKING. THE FENCE IS DESIGNED TO RETAIN SEDIMENT-LADEN WATER AND ALLOW SETTLEMENT OF SUSPENDED SOILS BEFORE THE STORM WATER FLOWS THROUGH THE FABRIC FOR DISCHARGE DOWNSTREAM. SILT FENCE SHALL BE LOCATED AS SHOWN ON THE PLAN & PROFILE SHEETS. THE SILT FENCE TO BE INCLUDED FOR THIS PROJECT SHALL BE CONSTRUCTED PER WISCONSIN DNR TECHNICAL STANDARDS FOR SILT FENCE (CODE 1056).
 - (B) TEMPORARY TRACKING PAD - ALL ACCESS POINTS FROM THE PUBLIC STREET INTO THE CONSTRUCTION SITE SHALL INCLUDE A TRACKING PAD COMPOSED OF COURSE STONE TO THE DIMENSIONS SHOWN ON DETAIL SHEET (C202). ANY SEDIMENT REACHING A PUBLIC OR PRIVATE ROAD SHALL BE REMOVED BY STREET CLEANING (NOT FLOUING) BEFORE THE END OF EACH WORKDAY.
 - (C) STORM SEWER INLET PROTECTION - CURB AND GRATED INLETS ARE PROTECTED FROM THE INTRUSION OF SILT AND SEDIMENT THROUGH A VARIETY OF SEDIMENT CONTROL PRACTICES TO ALLOW SETTLEMENT OF SUSPENDED SOILS BEFORE DISCHARGING INTO THE STORM SEWER. GRATED INLETS TYPICALLY INCLUDE A STURDY FRAME WRAPPED IN GEOTEXTILE FABRIC OR SEDIMENT LOG PERIMETER TO SLOW THE FLOW OF WATER AND ALLOW PONDS WHERE SEDIMENT MAY SETTLE OUT. CURB INLETS TYPICALLY INCLUDE SEDIMENT LOG BARRIERS HELD IN PLACE WITH GEOTEXTILE FABRIC. OTHER MANUFACTURED PRODUCTS ARE ALSO AVAILABLE. ALL STORM DRAINS SHALL BE PROTECTED BY USING STRAW BALES, SEDIMENT LOGS, FABRIC, OR EQUIVALENT BARRIER.
- FINAL SITE STABILIZATION IS ACHIEVED WHEN TURF GRASS COVER PROVIDES PERMANENT STABILIZATION FOR AT LEAST 70 PERCENT OF THE DISTURBED SOIL SURFACE, EXCLUSIVE OF AREAS THAT HAVE BEEN PAVED.
- OTHER POLLUTANT CONTROLS
 - (A) DUST CONTROL - CONSTRUCTION TRAFFIC MUST ENTER AND EXIT THE SITE AT THE STABILIZED CONSTRUCTION EXIT. THE PURPOSE IS TO TRAP DUST AND MUD THAT WOULD OTHERWISE BE CARRIED OFF-SITE BY CONSTRUCTION EQUIPMENT. WATER TRUCKS OR OTHER DUST CONTROL AGENTS WILL BE USED AS NEEDED DURING CONSTRUCTION TO REDUCE DUST GENERATED ON THE SITE. DUST CONTROL MUST BE PROVIDED BY THE GENERAL CONTRACTOR TO A DEGREE THAT IS ACCEPTABLE TO THE OWNER'S CONSTRUCTION MANAGER, AND IN COMPLIANCE WITH APPLICABLE LOCAL AND STATE DUST CONTROL REGULATIONS. AFTER CONSTRUCTION, THE SITE WILL BE STABILIZED (AS DESCRIBED ELSEWHERE), WHICH WILL REDUCE THE POTENTIAL FOR DUST GENERATION.
 - (B) SOLID WASTE DISPOSAL - NO SOLID MATERIALS, INCLUDING BUILDING MATERIALS, ARE ALLOWED TO BE DISCHARGED FROM THE SITE WITH STORM WATER. ALL SOLID WASTE, INCLUDING DISPOSABLE MATERIALS INCIDENTAL TO THE MAJOR CONSTRUCTION ACTIVITIES, MUST BE COLLECTED AND PLACED IN CONTAINERS. THE CONTAINERS WILL BE EMPTIED AS NECESSARY BY A CONTRACT TRASH DISPOSAL SERVICE AND HAULED AWAY FROM THE SITE. THE LOCATION OF SOLID WASTE RECEPTACLES SHALL BE SHOWN AND APPROVED BY THE OWNER. SUBSTANCES THAT HAVE THE POTENTIAL FOR POLLUTING SURFACE AND/OR GROUNDWATER MUST BE CONTROLLED BY WHATEVER MEANS NECESSARY IN ORDER TO ENSURE THAT THEY DO NOT DISCHARGE FROM THE SITE. FOR EXAMPLE, SPECIAL CARE MUST BE EXERCISED DURING EQUIPMENT FUELING AND SERVICING OPERATIONS. IF A SPILL OCCURS, IT MUST BE CONTAINED AND DISPOSED SO THAT IT WILL NOT FLOW FROM THE SITE OR ENTER GROUNDWATER, EVEN IF THIS REQUIRES REMOVAL, TREATMENT, AND DISPOSAL OF SOIL. IN THIS REGARD, POTENTIALLY POLLUTING SUBSTANCES SHOULD BE HANDLED IN A MANNER CONSISTENT WITH THE IMPACT THEY REPRESENT.
 - (C) SANITARY FACILITIES - ALL PERSONNEL INVOLVED WITH CONSTRUCTION ACTIVITIES MUST COMPLY WITH STATE AND LOCAL SANITARY OR SEPTIC SYSTEM REGULATIONS. TEMPORARY SANITARY FACILITIES MUST BE PROVIDED AT THE SITE THROUGHOUT THE CONSTRUCTION PHASE. THEY MUST BE UTILIZED BY ALL CONSTRUCTION PERSONNEL AND MUST BE SERVICED BY A COMMERCIAL OPERATOR.
 - (D) WATER SOURCE - NON-STORM WATER COMPONENTS OF SITE DISCHARGE MUST BE CLEAN WATER. WATER USED FOR CONSTRUCTION WHICH DISCHARGES FROM THE SITE MUST ORIGINATE FROM A PUBLIC WATER SUPPLIER, OR PRIVATE WELL APPROVED BY THE STATE HEALTH DEPARTMENT. WATER USED FOR CONSTRUCTION THAT DOES NOT ORIGINATE FROM AN APPROVED PUBLIC SUPPLY MUST NOT DISCHARGE FROM THE SITE. IT CAN BE RETAINED IN THE PONDS UNTIL IT INFILTRATES AND EVAPORATES.
 - (E) CONCRETE WASTE FROM CONCRETE READY-MIX TRUCKS - DISCHARGE OF EXCESS OR WASTE CONCRETE AND/OR WASH WATER FROM CONCRETE TRUCKS WILL BE ALLOWED ON THE CONSTRUCTION SITE, BUT ONLY IN SPECIFICALLY DESIGNATED DIKED AREAS PREPARED TO PREVENT CONTACT BETWEEN THE CONCRETE AND/OR WASH WATER AND STORM WATER THAT WILL BE DISCHARGED FROM THE SITE. ALTERNATIVELY, WASTE CONCRETE CAN BE PLACED INTO FORMS TO MAKE RIP-RAP OR OTHER USEFUL CONCRETE PRODUCTS. THE CURED RESIDUE FROM THE CONCRETE WASHOUT DIKED AREAS SHALL BE DISPOSED IN ACCORDANCE WITH APPLICABLE STATE AND FEDERAL REGULATIONS. THE JOB SITE SUPERINTENDENT IS RESPONSIBLE FOR ASSURING THAT THESE PROCEDURES ARE FOLLOWED.
 - (F) FUEL TANKS - TEMPORARY ON-SITE FUEL TANKS FOR CONSTRUCTION VEHICLES SHALL MEET ALL STATE AND FEDERAL REGULATIONS. TANKS SHALL HAVE APPROVED SPILL CONTAINMENT WITH THE CAPACITY REQUIRED BY THE APPLICABLE REGULATIONS. THE TANK SHALL BE IN SOUND CONDITION FREE OF RUST OR OTHER DAMAGE WHICH MIGHT COMPROMISE CONTAINMENT. HOSES, VALVES, FITTINGS, CAPS, FILLER NOZZLES, AND ASSOCIATED HARDWARE SHALL BE MAINTAINED IN PROPER WORKING CONDITION AT ALL TIMES.
- MINIMIZING EROSION AND RUNOFF DURING TRENCH OPERATIONS
 - (A) EXCAVATED TRENCH MATERIALS SHALL BE PLACED ON THE UPPER SIDE OF THE TRENCH WHILE THE TRENCH IS OPEN.
 - (B) EXCAVATED TRENCH MATERIAL, UPON COMPLETING WORK IN TRENCH, SHALL BE PLACED BACK IN THE TRENCH OR HAULED AWAY TO A PROPER SPOIL SITE. THE TRENCH SHALL BE BACKFILLED AND STABILIZED AT THE END OF EACH WORKING DAY.

ENGINEER:

DELTA 3
 EVERY ROLL COUNTS
 PROFESSIONAL, CIVIL, MECHANICAL, & STRUCTURAL ENGINEERING-ARCHITECTURE
 GRASS ROOTS LAND DEVELOPMENT-PLANNING & CONSTRUCTION SERVICES
 875 SOUTH CHESTNUT STREET PHONE: (808) 348-5355
 PLATEVILLE, WISCONSIN 53181
 886 JACKSON STREET PHONE: (563) 542-9005
 DUBUOQUE, IOWA 52001

FOR QUESTIONS REGARDING THIS PROJECT, PLEASE CONTACT:

MR. MARK DIGMAN, P.E.
 DELTA 3 ENGINEERING, INC.
 TELEPHONE: (808) 348-5355

CONSENT STATEMENT
 ALL RIGHTS RESERVED, AND NO REPRODUCTION WITHOUT CONSENT. ALL DRAWINGS, SPECS, REPORTS, DATA AND OTHER DOCUMENTS CONTAINED ON THIS PLAN SHEET ARE CREATED BY AND FOR DELTA 3 ENGINEERING AND THEIR CLIENTS USE. USE, REPRODUCTION, OR DISTRIBUTION OF ANY CONTENT HEREIN, IN ANY FORM, WHETHER PRINTED, ELECTRONIC, OR OTHERWISE, REQUIRES THE EXPLICIT WRITTEN PERMISSION OF THE OWNER.

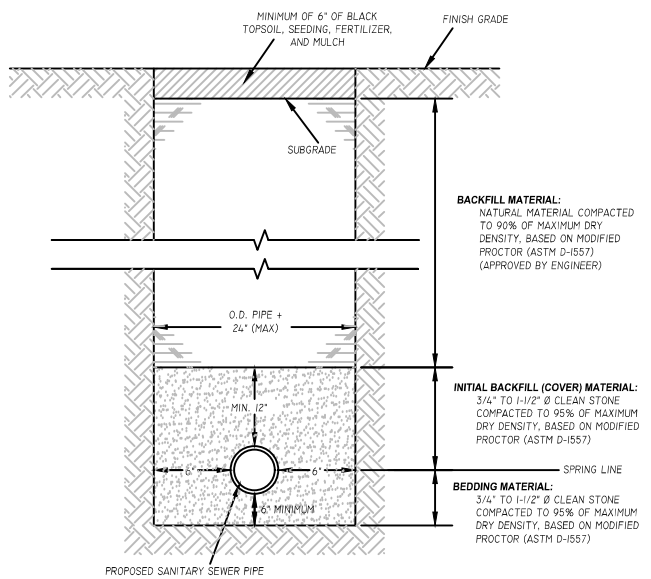
PROPOSED 2020 INFRASTRUCTURE IMPROVEMENTS - PINE STREET

MINERAL POINT, WI
 PROJECT LOCATION: PINE STREET (W. COMMERCE ST. - WASHINGTON ST.)
 OWNER: CITY OF MINERAL POINT; 137 HIGH STREET, SUITE 1, MINERAL POINT, WI 53565

REVISIONS		
NO.	DATE	DESCRIPTION

AS-BUILT: _____ BY: _____

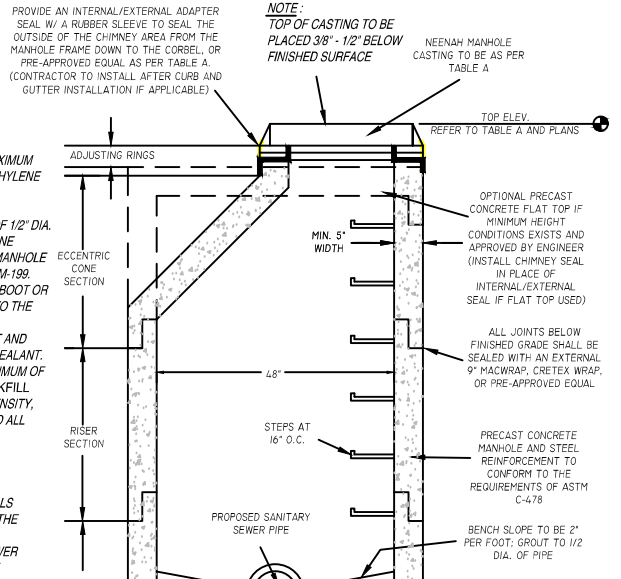
FOR BID	
PROJECT NUMBER	D20-001
SHEET NUMBER	NOT TO SCALE
DRAWN BY	C. COYIER
DATE ISSUED	APRIL 27, 2020
SHEET DESC.	DETAILS - EROSION CONTROL & NOTES



MANHOLE FLOOR DETAIL
SCALE: N.T.S.

NOTES:
 1. **ADJUSTING RINGS** - MINIMUM RING HEIGHT= 1"; MAXIMUM RING HEIGHT= 6"; RINGS TO BE HIGH-DENSITY POLYETHYLENE (H.D.P.E.) ADJUSTING RINGS BY LATTECH, INC. OR PRE-APPROVED EQUAL.
 2. **MANHOLE STEPS** - STEPS SHALL BE FABRICATED OF 1/2" DIA. GRADE 60 STEEL REINFORCEMENT WITH POLYETHYLENE PLASTIC COVERING BY M.A. INDUSTRIES, OR EQUAL. MANHOLE STEPS SHALL CONFORM TO ASTM C-478 AND AASHTO M-199.
 3. **PIPE CONNECTIONS** - PROVIDE A PRESS-SEAL PSX BOOT OR PRE-APPROVED EQUAL FOR ALL PIPE CONNECTIONS TO THE MANHOLE.
 4. **MANHOLE JOINTS** - JOINTS SHALL BE WATER TIGHT AND SHALL BE MADE USING RUBBER GASKETS OR BUTYL SEALANT.
 5. **STRUCTURE BACKFILL MATERIAL** - PROVIDE A MINIMUM OF 12" OF CRUSHED ROAD GRAVEL OR GRANULAR BACKFILL MATERIAL COMPACTED TO 95% OF MAXIMUM DRY DENSITY, BASED ON MODIFIED PROCTOR (ASTM D-1557) AROUND ALL SIDES OF MANHOLE.

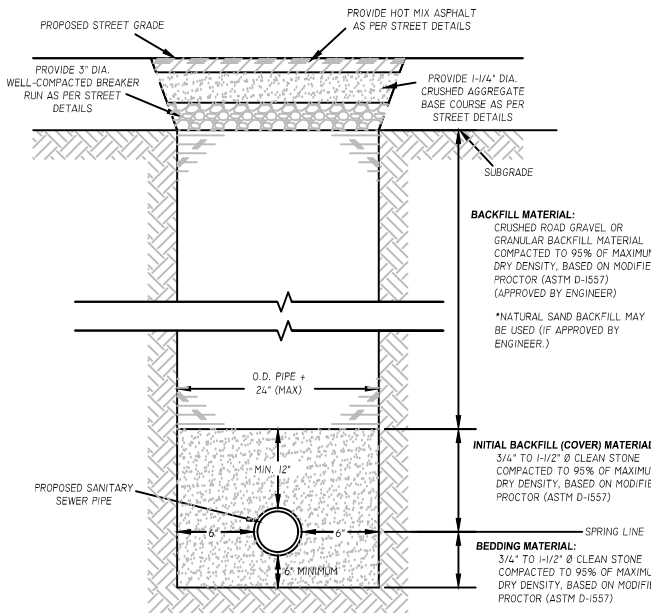
SANITARY SEWER NOTE:
 THE LOCATION OF EXISTING SANITARY SEWER LATERALS ARE APPROXIMATE. THE CONTRACTOR SHALL VERIFY THE LOCATION AND STATUS OF EACH SANITARY SEWER LATERAL ENCOUNTERED. ONLY ACTIVE SANITARY SEWER LATERALS SHALL BE RECONNECTED TO THE SANITARY SEWER MAIN.



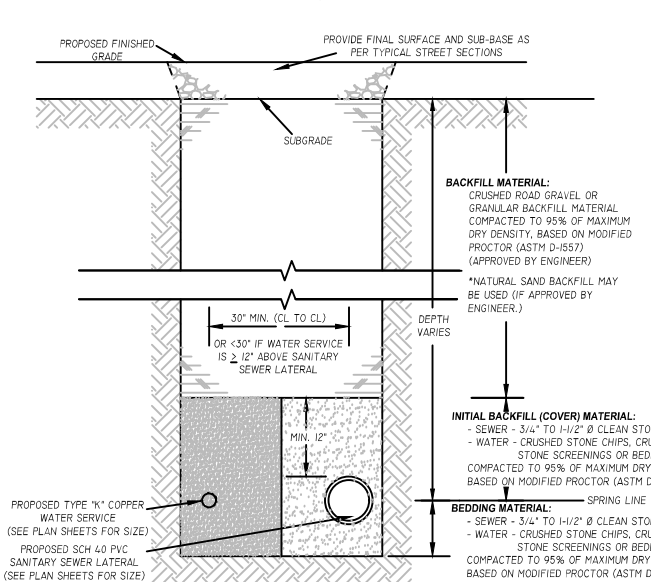
PRECAST CONCRETE MANHOLE DETAIL
SCALE: N.T.S.

NOTE: TOP OF CASTING TO BE PLACED 3/8" - 1/2" BELOW FINISHED SURFACE.

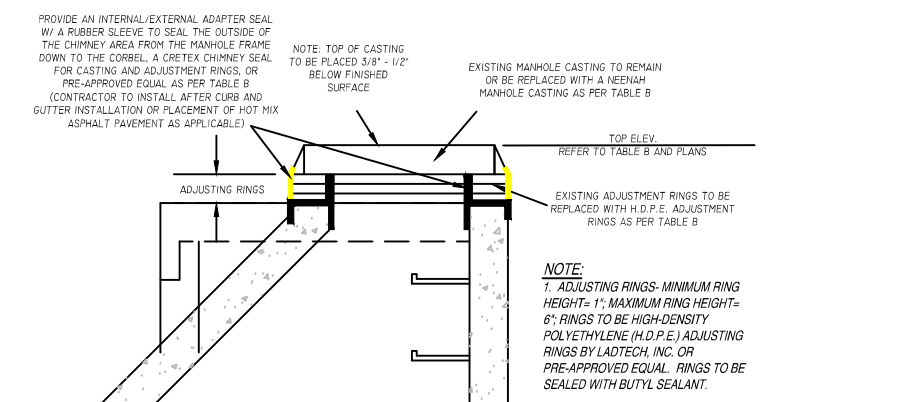
TYPICAL TRENCH AND BEDDING DETAIL - SANITARY SEWER
(NOT LOCATED UNDER STREET, PARKING LOT, ETC.)
SCALE: N.T.S.



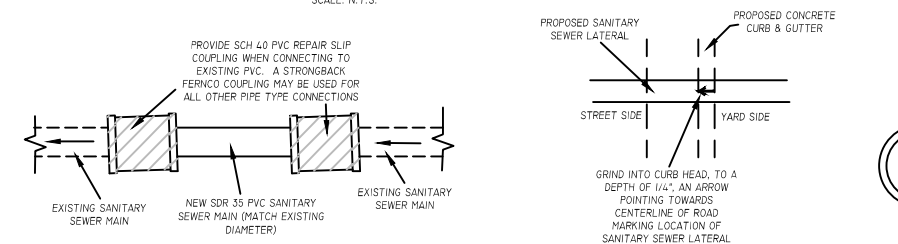
TYPICAL TRENCH AND BEDDING DETAIL - SANITARY SEWER
(LOCATED UNDER STREET, PARKING LOT, ETC.)
SCALE: N.T.S.



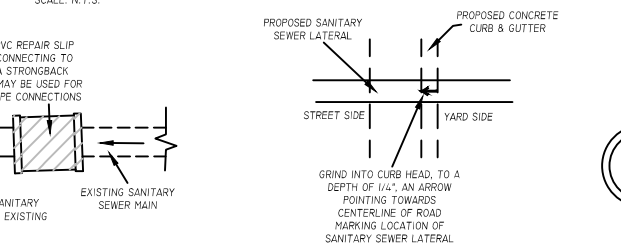
DUAL SERVICE TRENCH DETAIL
SCALE: N.T.S.



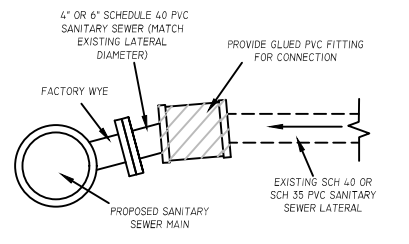
MANHOLE CHIMNEY REHABILITATION DETAIL
SCALE: N.T.S.



SANITARY SEWER MAIN SPOT REPAIR/CONNECTION DETAIL
SCALE: N.T.S.



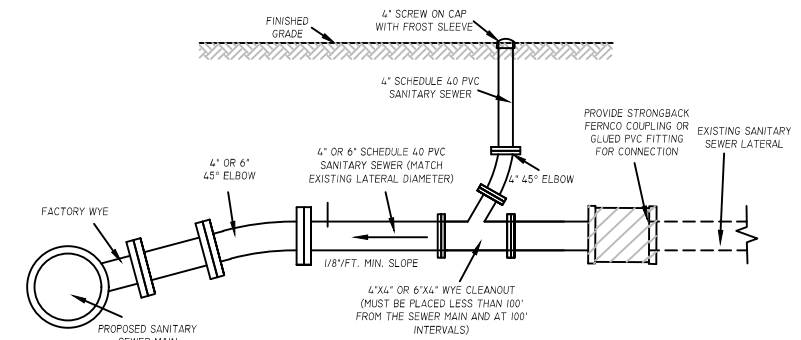
SEWER LATERAL MARKING DETAIL
SCALE: N.T.S.



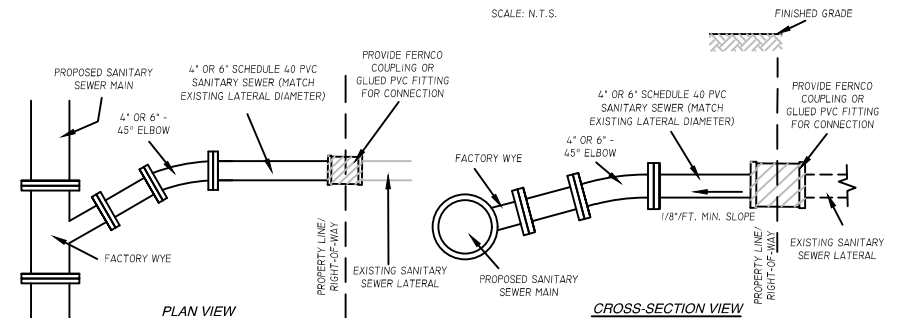
RECONNECT SANITARY SEWER LATERAL DETAIL
SCALE: N.T.S.

STRUCTURE NUMBER:	STA./LOCATION:	TYPE/SIZE:	CASTING TYPE:	TOP ELEV.:	INV. OUT ELEV.:	DEPTH:	FRAME/CHIMNEY:	DROP MANHOLE:
SAN MH #30	103+34.52, 0.00'	PRECAST CONCRETE 4' DIA.	R-1550*	1086.30'	(S) 1079.03'	7.27'	INTERNAL/EXTERNAL	NO
SAN MH 30A	104+65.00, 4.00' L	PRECAST CONCRETE 4' DIA.	R-1550*	1075.55'	(S) 1067.55'	8.10'	INTERNAL/EXTERNAL	NO
SAN MH #209	108+50.18, 4.55' L	PRECAST CONCRETE 4' DIA.	R-1550*	1080.47'	(N) 1075.00'	5.47'	INTERNAL/EXTERNAL	NO

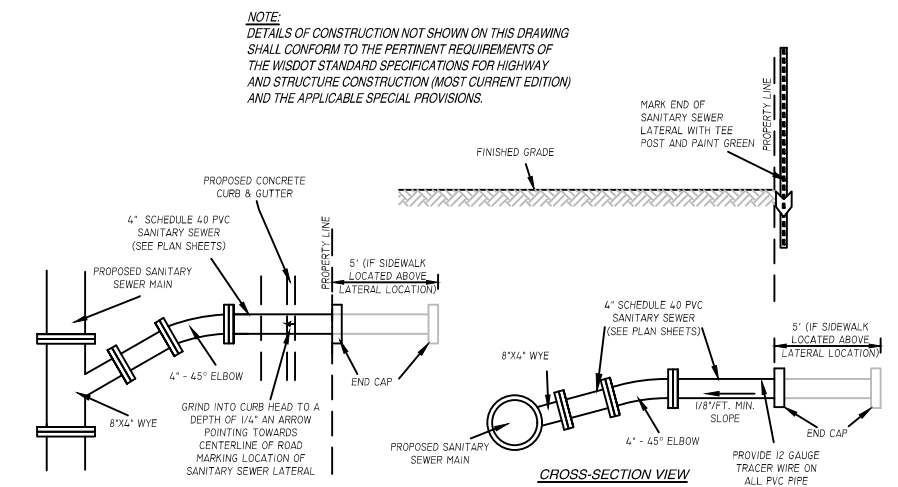
NOTE: CASTING TO BE NEEHAH, NON-ROCKING CASTING WITH A SELF SEALING, TYPE 'B' LID WITH SEALED PICK HOLES.
 ** NOTE: ALL ADJUSTMENT RINGS TO BE HDPE ADJUSTING RINGS BY LATTECH, INC. OR PRE-APPROVED EQUAL.



REPLACE SANITARY SEWER LATERAL AND INSTALL CLEANOUT DETAIL
SCALE: N.T.S.



REPLACE SANITARY SEWER LATERAL DETAIL
SCALE: N.T.S.



NEW 4" SANITARY SEWER LATERAL DETAIL
SCALE: N.T.S.

STRUCTURE NUMBER:	STA./LOCATION:	TYPE/SIZE:	EX. TOP ELEV.:	PROP. TOP ELEV.:	CHANGE:	COMMENTS:
SAN MH #27A	106+24.91, 1.52' L	4' DIA. PRECAST	1072.13'	1,072.19'	+0.06'	UTILIZE EXISTING CASTING, REMOVE AND REPLACE EXISTING ADJUSTMENT RINGS. REMOVE AND REINSTALL CHIMNEY SEAL.

** NOTE: ALL ADJUSTMENT RINGS TO BE HDPE ADJUSTING RINGS BY LATTECH, INC. OR PRE-APPROVED EQUAL.

ENGINEER:
DELTA 3
 875 SOUTH CHESTNUT STREET
 PLATEVILLE, WISCONSIN 53181
 888 JACKSON STREET
 DUBUQUE, IOWA 52001

FOR QUESTIONS REGARDING THIS PROJECT, PLEASE CONTACT:
MR. MARK DIGMAN, P.E.
 DELTA 3 ENGINEERING, INC.
 TELEPHONE: (608) 348-5355

CONSENT STATEMENT
 ALL RIGHTS RESERVED, AND NO REPRODUCTION WITHOUT CONSENT. ALL DRAWINGS, SPECS, REPORTS, DATA AND OTHER DOCUMENTS CONTAINED ON THIS PLAN SHEET ARE CREATED BY AND FOR DELTA 3 ENGINEERING, AND THEIR CLIENTS' USE. REPRODUCTION OR DISTRIBUTION OF ANY CONTENT HEREIN, IN ANY FORM, WHETHER PRINTED, ELECTRONIC, OR OTHERWISE, REQUIRES THE EXPLICIT WRITTEN PERMISSION OF THE OWNER.

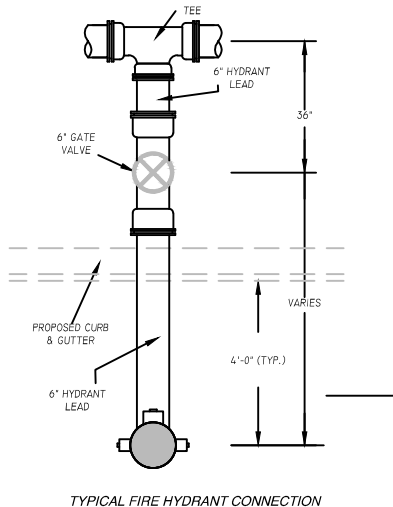
PROPOSED 2020 INFRASTRUCTURE IMPROVEMENTS - PINE STREET
MINERAL POINT, WI
 PROJECT LOCATION: PINE STREET (W. COMMERCE ST - WASHINGTON ST)
 OWNER: CITY OF MINERAL POINT, 137 HIGH STREET, SUITE 1, MINERAL POINT, WI 53665

NO.	DATE	DESCRIPTION

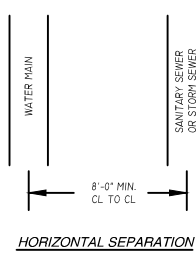
PROJECT NUMBER	D20-001
SHEET SCALE	NOT TO SCALE
DRAWN BY	C. COYIER
DATE ISSUED	APRIL 27, 2020
SHEET DESC.	DETAILS - SANITARY SEWER SYSTEM

SHEET TITLE:
C203
 SHEET NUMBER # 09 of 15

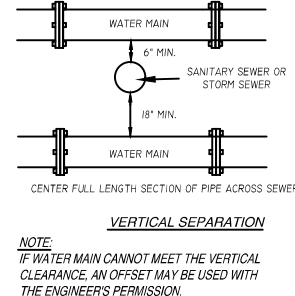
ALL PIPE, FITTINGS, AND ACCESSORIES TO BE MANUFACTURED IN THE UNITED STATES



TYPICAL FIRE HYDRANT CONNECTION
SCALE: N.T.S.

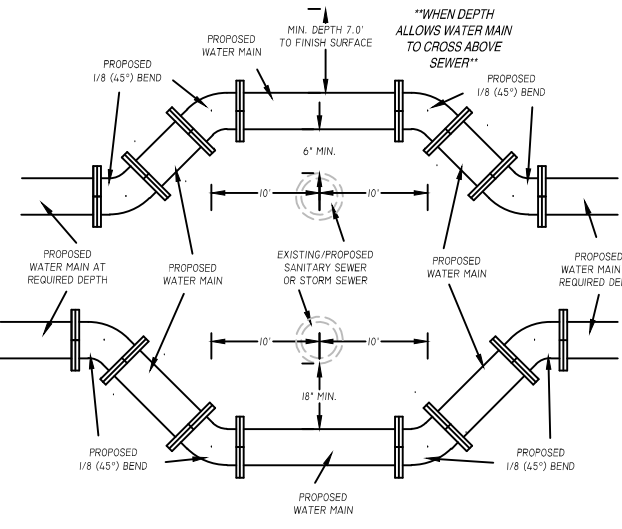


HORIZONTAL SEPARATION



VERTICAL SEPARATION

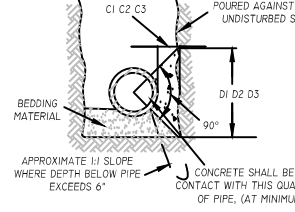
WATER MAIN SEPARATION DETAIL
(PER NR 811.67)
SCALE: N.T.S.



UTILITY CROSSING DETAIL
(PER NR 811)
SCALE: N.T.S.

BUTTRSS DIMENSIONS

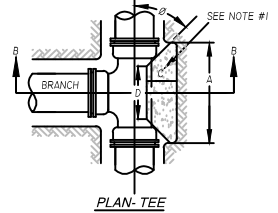
PIPE SIZE	22 1/2° BENDS		45° BENDS		90° BENDS	
	B1	D1	B2	D2	B3	D3
6"	1'-0"	1'-0"	1'-0"	1'-0"	1'-4"	1'-2"
8"	1'-0"	1'-0"	1'-4"	1'-4"	1'-10"	1'-6"
10"	1'-4"	1'-4"	1'-10"	1'-10"	2'-8"	2'-3"
12"	1'-4"	1'-4"	1'-10"	1'-10"	2'-8"	2'-3"



SECTION A-A

- DIMENSIONS IN TABLE ARE BASED ON A WATER PRESSURE OF 150 PSI AND ON EARTH RESISTANCE OF TWO TONS PER SQ. FT.
- DIMENSION C1, C2, C3 SHOULD BE LARGE ENOUGH TO MAKE ANGLE θ EQUAL TO OR LARGER THAN 45°.
- DIMENSION A1, A2, A3 SHOULD BE AS LARGE AS POSSIBLE WITHOUT INTERFERING WITH M.J. BOLTS.
- THE BACK SHAPE OF THE BUTTRSS MAY VARY AS LONG AS POUR IS AGAINST FIRM UNDISTURBED EARTH.
- ALL IRON PIPE AND FITTINGS SHALL BE WRAPPED IN POLYETHYLENE.

BUTTRSS FOR BENDS
SCALE: N.T.S.

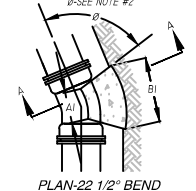


PLAN-TEE

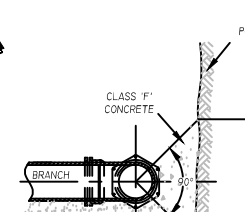
- DIMENSION 'C' SHOULD BE LARGE ENOUGH TO MAKE θ ANGLE EQUAL TO OR LARGER THAN 45°.
- CONCRETE SHOULD BEAR ON THIS QUADRANT OF PIPE AS A MINIMUM.
- DIMENSION 'D' SHOULD BE AS LARGE AS POSSIBLE, BUT CONCRETE SHOULD NOT INTERFERE WITH MECHANICAL JOINTS.
- BUTTRSS DIMENSIONS ARE BASED ON SOIL RESISTANCE OF TWO TONS PER SQ. FT. AND A WATER PRESSURE OF 150 PSI.
- ALL IRON PIPE AND FITTINGS SHALL BE WRAPPED IN POLYETHYLENE.

BUTTRSS DIMENSIONS

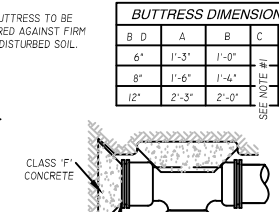
B	D	A	C	D
6"	1'-3"	1'-0"		
8"	1'-6"	1'-4"		
12"	2'-3"	2'-0"		



PLAN-22 1/2° BEND

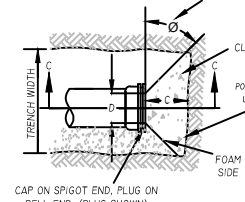


SECTION B-B



PLAN-TEE WITH PLUG

BUTTRSS FOR TEES
SCALE: N.T.S.



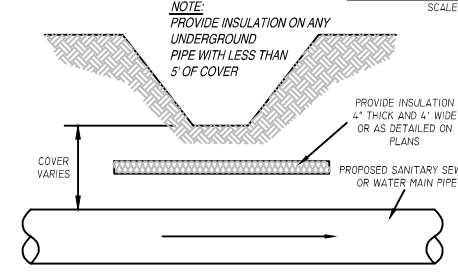
SECTION C-C

- DIMENSION 'C' SHOULD BE LARGE ENOUGH TO MAKE ANGLE θ EQUAL TO OR LARGER THAN 45°.
- DIMENSION 'D' EQUALS APPROX. I.D. OF PIPE LESS 2". AN EFFORT SHOULD BE MADE TO PREVENT THE CONCRETE FROM COVERING THE M.J. BOLTS.
- WHERE BUTTRSS ARE NOT POSSIBLE BECAUSE OF POOR SOIL CONDITIONS OR LACK OF ROOM, STRAPPING SHALL BE PERMITTED.
- BUTTRSS DIMENSIONS ARE BASED ON A SOIL RESISTANCE OF TWO TONS PER SQ. FT. AND A WATER PRESSURE OF 150 PSI.

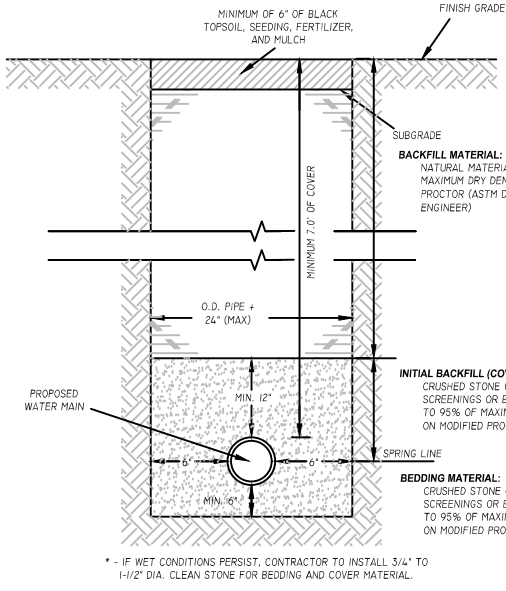
BUTTRSS DIMENSIONS

B	D	A	C	D
6"	1'-6"	1'-2"		
8"	2'-0"	1'-4"		
10"/12"	2'-5"	1'-10"		

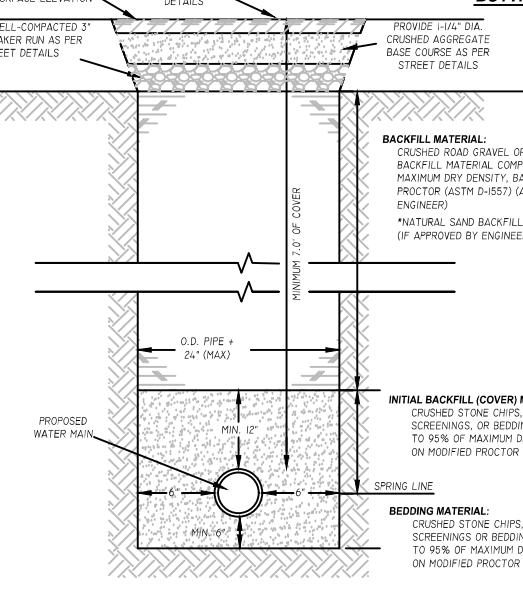
BUTTRSS FOR DEAD ENDS
SCALE: N.T.S.



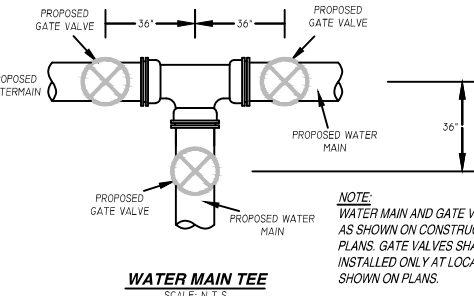
PIPE INSULATION DETAIL
SCALE: N.T.S.



TYPICAL TRENCH AND BEDDING DETAIL - WATER MAIN
(NOT LOCATED UNDER STREET, PARKING LOT, ETC.)
SCALE: N.T.S.

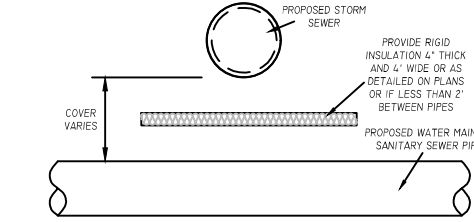


TYPICAL TRENCH AND BEDDING DETAIL - WATER MAIN
(LOCATED UNDER STREET, PARKING LOT, ETC.)
SCALE: N.T.S.



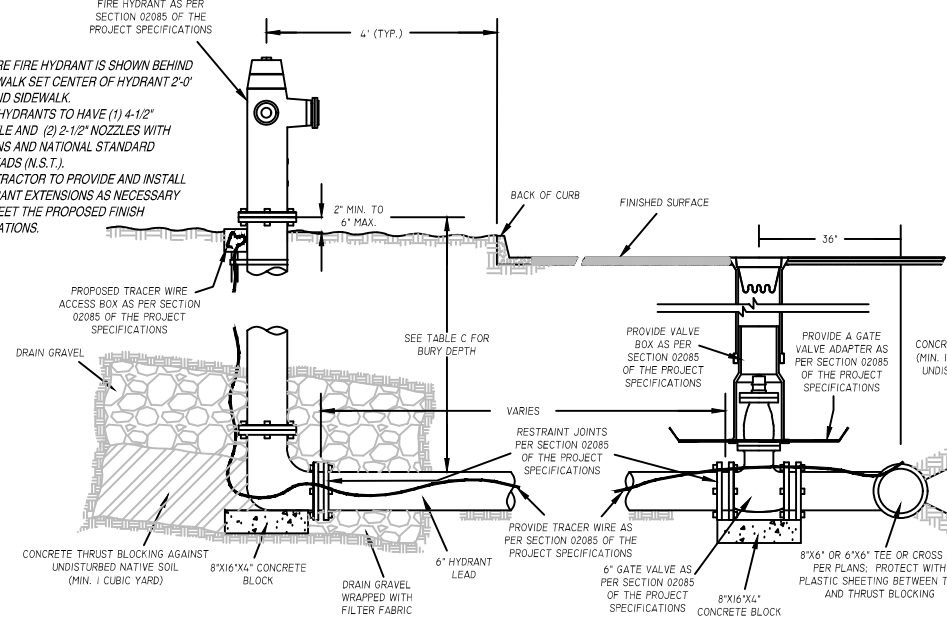
WATER MAIN TEE
SCALE: N.T.S.

NOTE: WATER MAIN AND GATE VALVE SIZE AS SHOWN ON CONSTRUCTION PLANS. GATE VALVES SHALL BE INSTALLED ONLY AT LOCATIONS SHOWN ON PLANS.

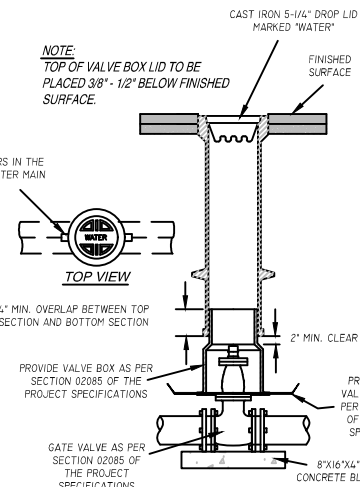


STORM PIPE CROSSING INSULATION DETAIL
SCALE: N.T.S.

- NOTES:**
- WHERE FIRE HYDRANT IS SHOWN BEHIND SIDEWALK SET CENTER OF HYDRANT 2'-0" BEHIND SIDEWALK.
 - FIRE HYDRANTS TO HAVE (1) 4-1/2" NOZZLE AND (2) 2 1/2" NOZZLES WITH CHAINS AND NATIONAL STANDARD THREADS (N.S.T.).
 - CONTRACTOR TO PROVIDE AND INSTALL HYDRANT EXTENSIONS AS NECESSARY TO MEET THE PROPOSED FINISH ELEVATIONS.



FIRE HYDRANT ASSEMBLY DETAIL
SCALE: N.T.S.



VALVE AND VALVE BOX DETAIL
SCALE: N.T.S.

TABLE C - HYDRANTS

STRUCTURE NUMBER:	STATION/LOCATION:	GROUND ELEV.:	FLANGE ELEV.:	BOT. HYD TEE ELEV.:	BURY DEPTH:
HYD #1	103+55.55, 17.99' R	1084.72'	1084.74'	1076.74'	8.00'

ENGINEER:
DELTA 3
STEVEN W. COVIER
PROFESSIONAL CIVIL, MUNICIPAL, & STRUCTURAL ENGINEERING—REGISTERED
GRANT WRITING—LAND DEVELOPMENT—PLANNING & CAD SERVICES
875 SOUTH CHESTNUT STREET PHONE: (608) 348-5355
PLATEVILLE, WISCONSIN 53183
888 JOHNSON STREET PHONE: (563) 542-9005
DUBUQUE, IOWA 52001

FOR QUESTIONS REGARDING THIS PROJECT, PLEASE CONTACT:
MR. MARK DIGMAN, P.E.
DELTA 3 ENGINEERING, INC.
TELEPHONE: (608) 348-5355

CONSENT STATEMENT
ALL RIGHTS RESERVED, AND NO REPRODUCTION WITHOUT CONSENT. ALL DRAWINGS, SPECS, REPORTS, DATA AND OTHER DOCUMENTS CONTAINED ON THIS PLAN SHEET ARE CREATED BY AND FOR DELTA 3 ENGINEERING AND THEIR CLIENTS' USE. REPRODUCTION OR DISTRIBUTION OF ANY CONTENT HEREIN, IN ANY FORM, WHETHER PRINTED, ELECTRONIC, OR OTHERWISE, REQUIRES THE EXPLICIT WRITTEN PERMISSION OF THE OWNER.

PROPOSED 2020 INFRASTRUCTURE IMPROVEMENTS - PINE STREET
MINERAL POINT, WI
PROJECT LOCATION: PINE STREET (W. COMMERCE ST. - WASHINGTON ST.)
OWNER: CITY OF MINERAL POINT, 137 HIGH STREET, SUITE 1, MINERAL POINT, WI 53565

REVISIONS

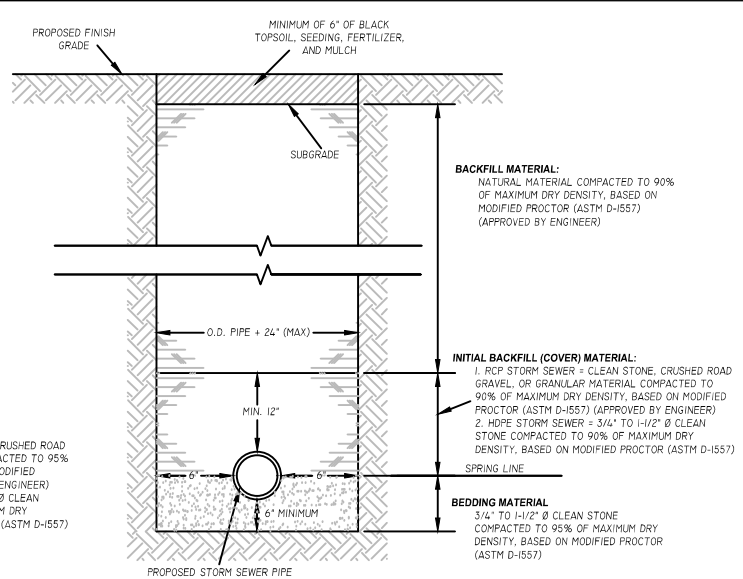
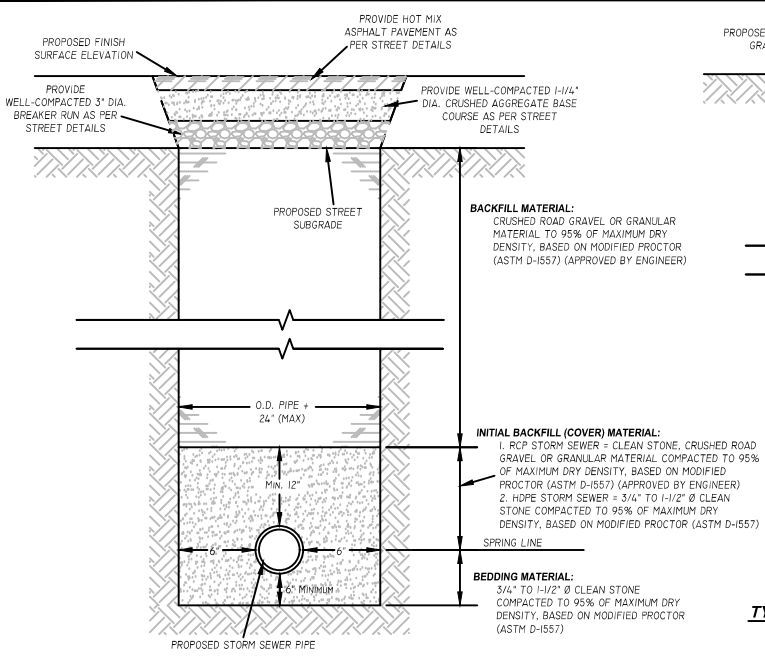
NO.	DATE	DESCRIPTION

AS-BUILT: BY:

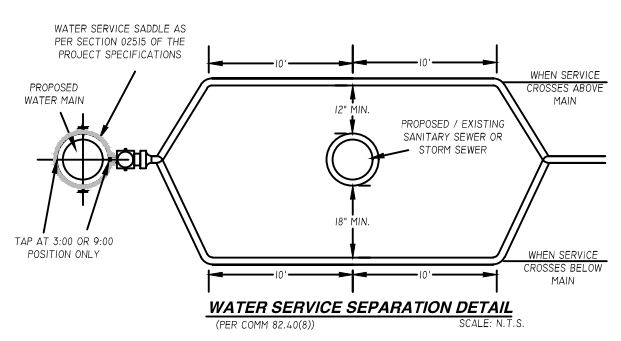
FOR BID

PROJECT NUMBER:	D20-001
SHEET SCALE:	NOT TO SCALE
DRAWN BY:	C. COVIER
DATE ISSUED:	APRIL 27, 2020
SHEET DESC.:	DETAILS - WATER SYSTEM

SHEET TITLE:
C204
SHEET NUMBER # 10 of 15

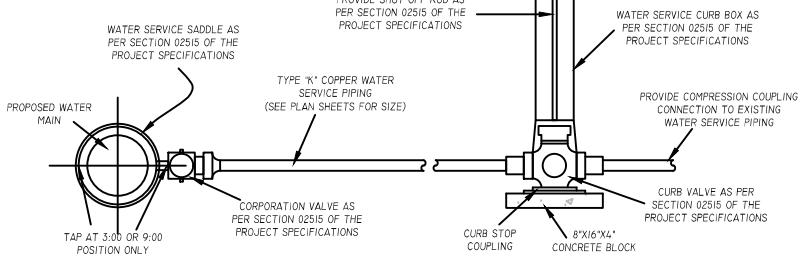


TYPICAL TRENCH AND BEDDING DETAIL - STORM SEWER
(NOT LOCATED UNDER STREET, PARKING LOT, DRIVEWAY, ETC.)
SCALE: N.T.S.



WATER SERVICE MARKING DETAIL
SCALE: N.T.S.

CURB STOP ORIENTATION DETAIL
SCALE: N.T.S.



WATER SERVICE SEPARATION DETAIL
SCALE: N.T.S.

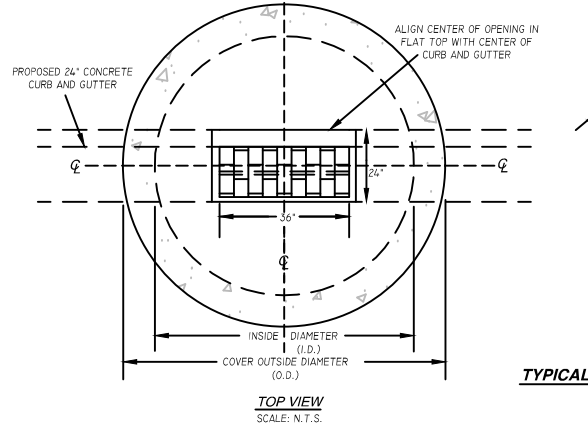
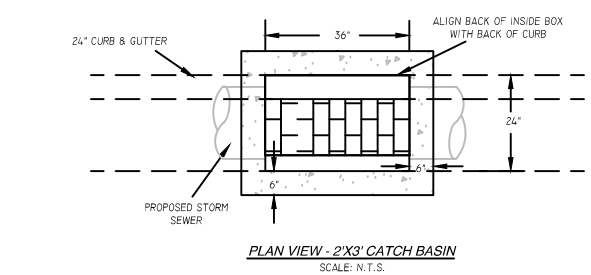


RECONNECT WATER SERVICE DETAIL
SCALE: N.T.S.

WATER SERVICE IN STREET OR DRIVEWAY DETAIL
SCALE: N.T.S.

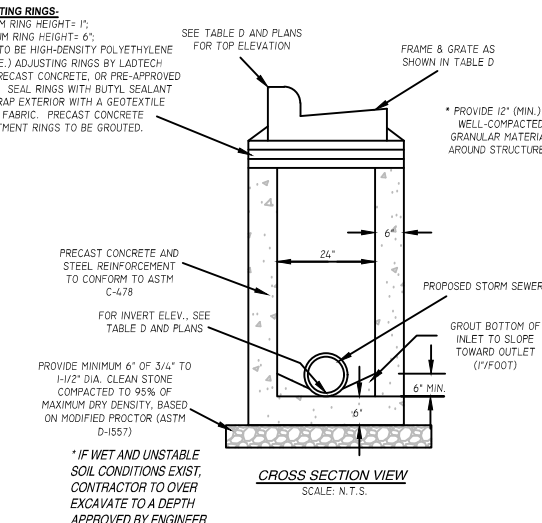
NEW WATER SERVICE DETAIL
SCALE: N.T.S.

TYPICAL TRENCH AND BEDDING DETAIL - STORM SEWER
(LOCATED UNDER STREET, PARKING LOT, DRIVEWAY, ETC.)
SCALE: N.T.S.

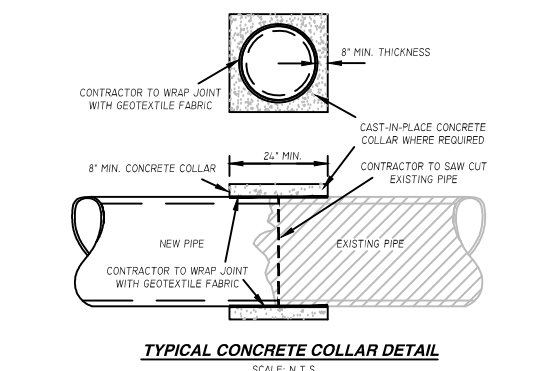


WATER SERVICE IN STREET OR DRIVEWAY DETAIL
SCALE: N.T.S.

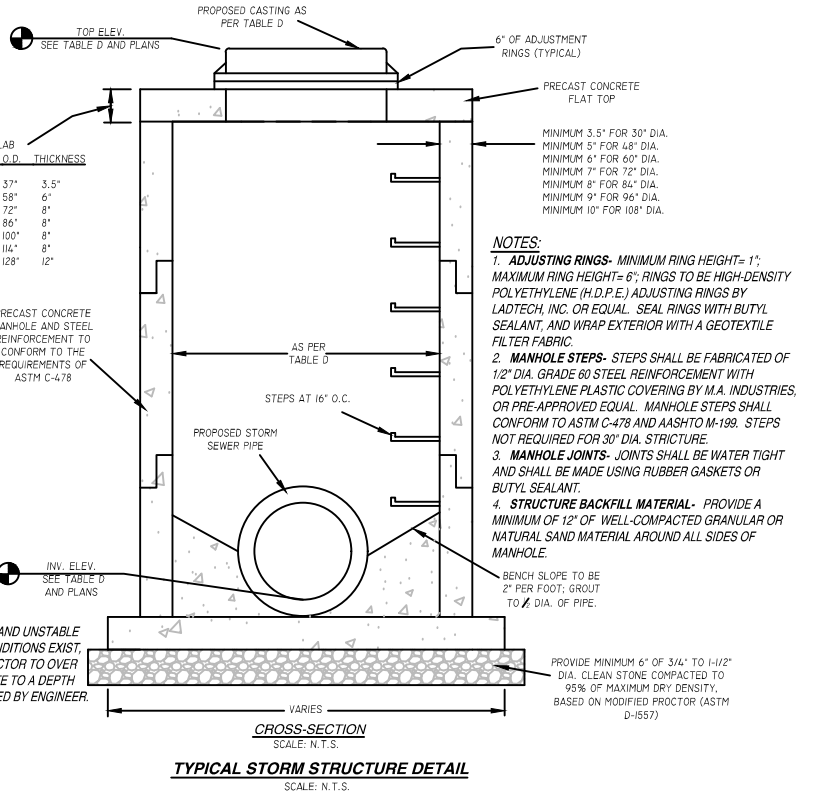
NEW WATER SERVICE DETAIL
SCALE: N.T.S.



TYPICAL 2'X3' CATCH BASIN DETAIL
SCALE: N.T.S.



TYPICAL CONCRETE COLLAR DETAIL
SCALE: N.T.S.



TYPICAL STORM STRUCTURE DETAIL
SCALE: N.T.S.

TABLE D - STORM STRUCTURES

STRUC. NUMBER:	STA./LOCATION:	TYPE/SIZE:	CASTING TYPE:	TOP ELEV.:	INV. OUT ELEV.:	DEPTH:	INLET PROTECTION:
CB #40	103+22.31, 16.64' R	2'X3' PRECAST BOX	R-3067-L	1088.00'	(S) 1084.00'	4.00'	TYPE "D" OR SEDIMENT LOG
CB #39	103+65.44, 12.99' R	2'X3' PRECAST BOX	R-3067-L	1083.82'	(S) 1079.82'	4.00'	TYPE "B" OR SEDIMENT LOG
CB #38	104+49.99, 13.05' L	2'X3' PRECAST BOX	R-3067-L	1076.39'	(S) 1072.39'	4.00'	TYPE "B" OR SEDIMENT LOG
CB #36	105+30.03, 13.00' L	2'X3' PRECAST BOX	R-3067-L	1072.42'	(S) 1068.42'	4.00'	TYPE "B" OR SEDIMENT LOG
CB #37	105+31.16, 13.00' R	2'X3' PRECAST BOX	R-3067-L	1072.86'	(E) 1068.86'	4.00'	TYPE "B" OR SEDIMENT LOG
CB #32	105+64.98, 13.00' R	2'X3' PRECAST BOX	R-3067-L	1072.18'	(E) 1068.43'	3.75'	TYPE "D" OR SEDIMENT LOG
CB #31	105+65.00, 13.00' L	4' DIA PRECAST	R-3067-L	1071.70'	(SE) 1067.03'	4.67'	TYPE "D" OR SEDIMENT LOG
EW #30	105+81.95, 50.65' L	4' HDPE ENDWALL			(SE) 1066.00'		
CB #33	106+56.26, 11.00' L	2'X3' PRECAST BOX	R-3067-L	1072.24'	(N) 1068.24'	4.00'	TYPE "B" OR SEDIMENT LOG
CB #34	106+62.37, 11.00' R	2'X3' PRECAST BOX	R-3067-L	1073.52'	(E) 1070.02'	3.50'	TYPE "D" OR SEDIMENT LOG
CB #35	107+99.97, 11.00' L	2'X3' PRECAST BOX	R-3067-L	1078.14'	(N) 1074.14'	4.00'	TYPE "B" OR SEDIMENT LOG

ENGINEER:
DELTA 3
EVERY ANGLE COVERED
PROFESSIONAL CIVIL, MUNICIPAL & STRUCTURAL ENGINEERING-REGISTERED
CIVIL, SURVEYING AND DESIGNER-PLANNING & CDD SERVICES
875 SOUTH OAKSIDE STREET
PLAINTAILLE, WISCONSIN 53118
PHONE: (608) 348-5355
888 JACOB STREET
DEBRAJE, ILLINOIS 60011
PHONE: (631) 542-9005

FOR QUESTIONS REGARDING THIS PROJECT, PLEASE CONTACT:
MR. MARK DIGMAN, P.E.
DELTA 3 ENGINEERING, INC.
TELEPHONE: (608) 348-5355

CONSENT STATEMENT
ALL RIGHTS RESERVED, AND NO REPRODUCTION WITHOUT CONSENT. ALL DRAWINGS, SPECS, REPORTS, DATA AND OTHER DOCUMENTS CONTAINED ON THIS PLAN SHEET ARE CREATED BY AND FOR DELTA 3 ENGINEERING AND THEIR CLIENTS USE. REPRODUCTION OR DISTRIBUTION OF ANY CONTENT HEREIN, IN ANY FORM, WHETHER PRINTED, ELECTRONIC, OR OTHERWISE, REQUIRES THE EXPLICIT WRITTEN PERMISSION OF THE OWNER.

PROPOSED 2020 INFRASTRUCTURE IMPROVEMENTS - PINE STREET
MINERAL POINT, WI
PROJECT LOCATION: PINE STREET (W. COMMERCE ST. - WASHINGTON ST.)
OWNER: CITY OF MINERAL POINT, 137 HIGH STREET, SUITE 1, MINERAL POINT, WI 53565

REVISIONS

NO.	DATE	DESCRIPTION

AS-BUILT: _____ BY: _____

FOR BID

PROJECT NUMBER: D20-001

SHEET SCALE: NOT TO SCALE

DRAWN BY: C. COVIER

DATE ISSUED: APRIL 27, 2020

SHEET DESC: DETAILS - WATER & STORM SYSTEMS

ENGINEER:

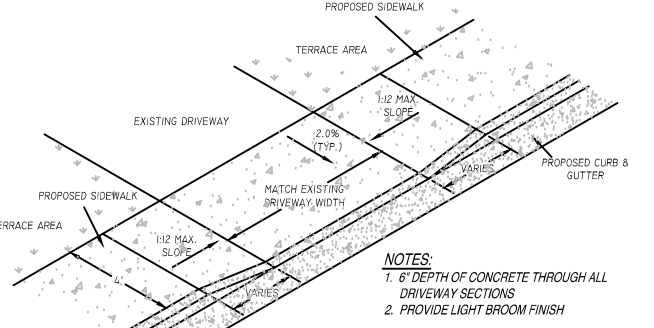
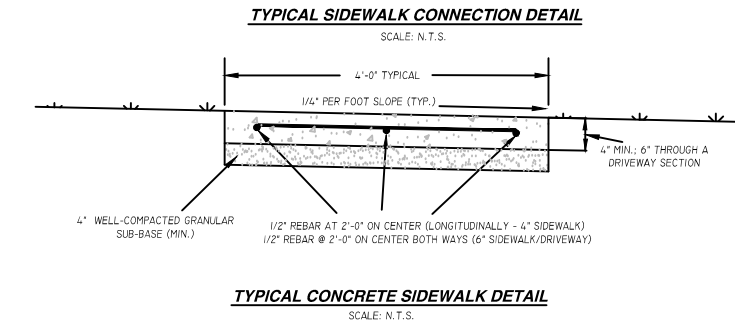
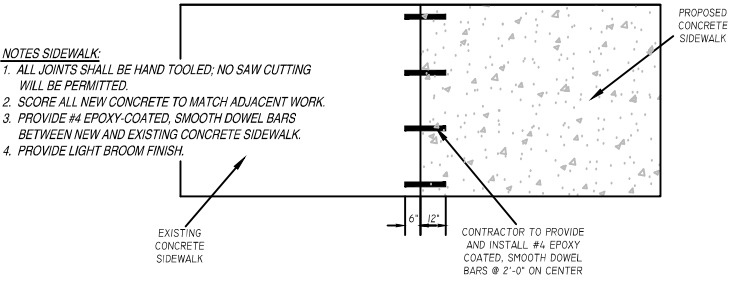
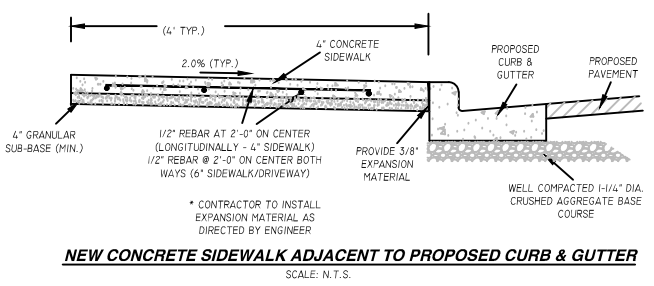


PROFESSIONAL CIVIL, MUNICIPAL, & STRUCTURAL ENGINEERING-ARCHITECTURE
GRADING-LAND DEVELOPMENT-PLANNING & CAD SERVICES
875 SOUTH CHESTNUT STREET PHONE: (608) 348-5355
PLATTEVILLE, WISCONSIN 53188
888 JACKSON STREET PHONE: (562) 542-9005
DUBUOUE, IOWA 52001

FOR QUESTIONS REGARDING THIS PROJECT, PLEASE CONTACT:

MR. MARK DIGMAN, P.E.
DELTA 3 ENGINEERING, INC.
TELEPHONE: (608) 348-5355

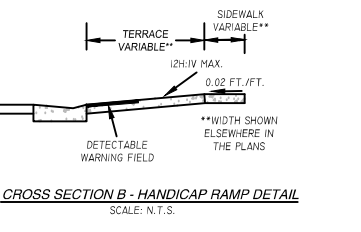
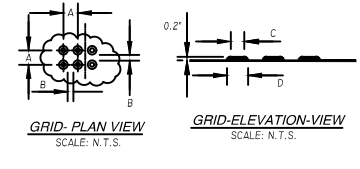
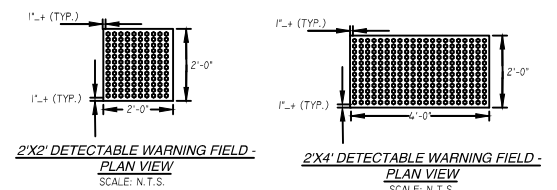
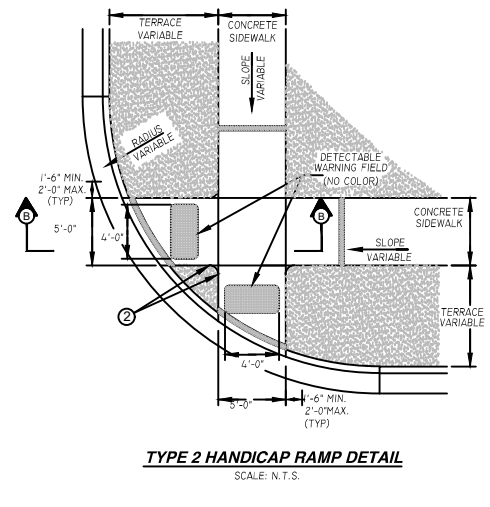
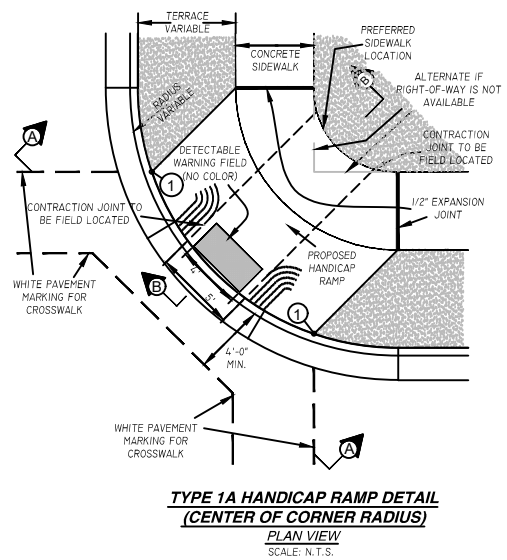
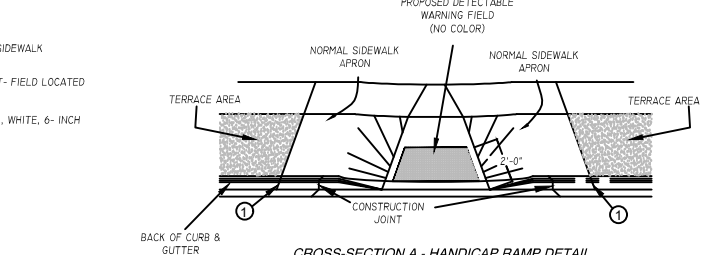
CONSENT STATEMENT
ALL RIGHTS RESERVED, AND NO REPRODUCTION WITHOUT CONSENT. ALL DRAWINGS, SPECS, REPORTS, DATA AND OTHER DOCUMENTS CONTAINED ON THIS PLAN SHEET ARE CREATED BY AND FOR DELTA 3 ENGINEERING AND THEIR CLIENTS' USE. REPRODUCTION OR DISTRIBUTION OF ANY CONTENT HEREIN, IN ANY FORM, WHETHER PRINTED, ELECTRONIC, OR OTHERWISE, REQUIRES THE EXPLICIT WRITTEN PERMISSION OF THE OWNER.



- GENERAL NOTES - HANDICAP RAMP:
- DETAILS OF CONSTRUCTION, MATERIALS AND WORKMANSHIP NOT SHOWN ON THIS DRAWING SHALL CONFORM TO THE PERTINENT REQUIREMENTS OF THE WISCONSIN DEPARTMENT OF TRANSPORTATION STANDARD SPECIFICATIONS (MOST CURRENT EDITION) AND THE APPLICABLE SPECIAL PROVISIONS.
- RAMPS SHALL BE BUILT AT 12H:1V OR FLATTER. WHEN NECESSARY, THE SIDEWALK ELEVATION MAY BE LOWERED TO MEET THE HIGH POINT ON THE RAMP.
- THE DETECTABLE WARNING FIELD SHALL BE PAID FOR BY EACH 2'X4' (8 S.F.) OR 2'X2' (4 S.F.) INSTALLATION.
- CURB RAMP DETECTABLE WARNING FIELD MATERIALS AND DEVICES SHALL BE APPROVED BY THE ENGINEER. THE COLOR OF THE DETECTABLE WARNING FIELD SHALL BE NO COLOR AND IS INCIDENTAL TO THE BID ITEM OF "CURB RAMP DETECTABLE WARNING FIELD."
- DETECTABLE WARNING FIELDS THAT ARE INSTALLED AS A GROUP OR SIDE BY SIDE, SHALL BE FROM THE SAME MANUFACTURER.
- SURFACE TEXTURE OF THE RAMP SHALL BE OBTAINED BY COURSE BROOMING TRANSVERSE TO THE SLOPE OF THE RAMP.
- DETECTABLE WARNING FIELDS FOR BIKE PATHS SHALL BE 6' WIDE FOR A 10' WIDE RAMP OPENING AND 8' WIDE FOR A 12' WIDE OPENING. DETECTABLE WARNING FIELDS SHALL BE CENTERED ON OPENING.

NOTES:
1. 6" DEPTH OF CONCRETE THROUGH ALL DRIVEWAY SECTIONS
2. PROVIDE LIGHT BROOM FINISH

LEGEND
EXPANSION JOINT- SIDEWALK
CONTRACTION JOINT- FIELD LOCATED
PAVEMENT MARKING, WHITE, 6- INCH



REVISIONS

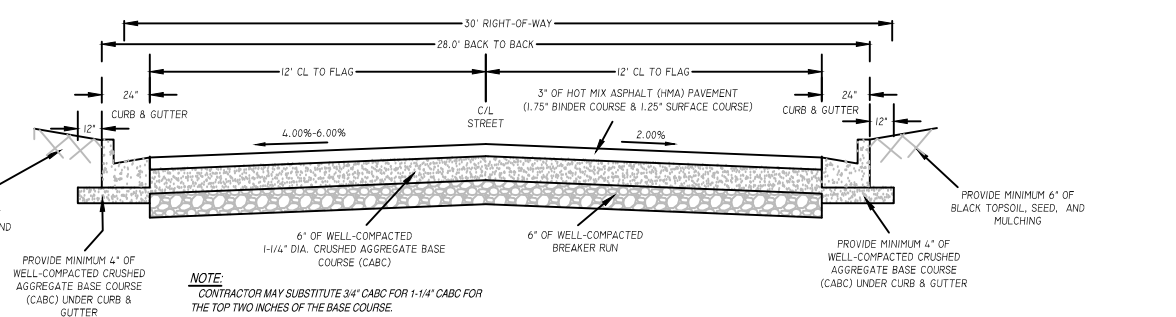
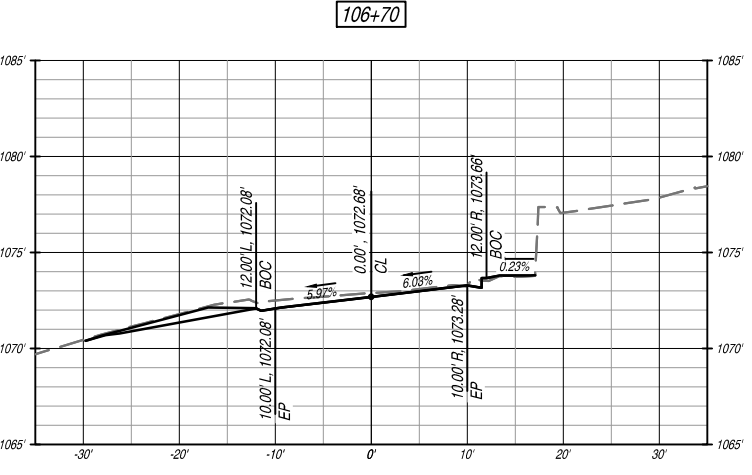
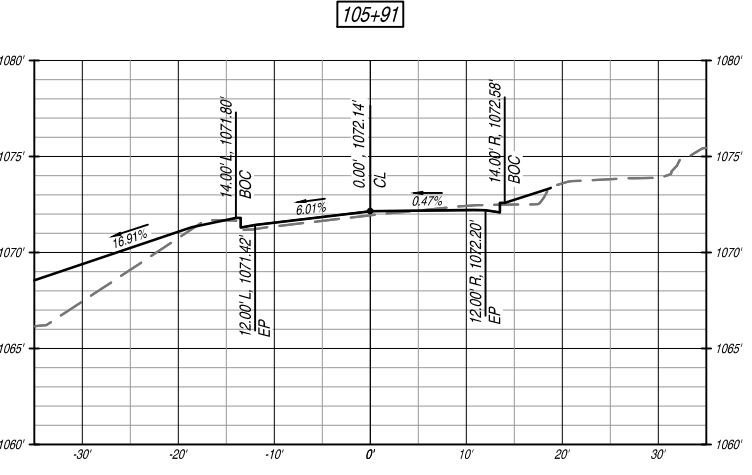
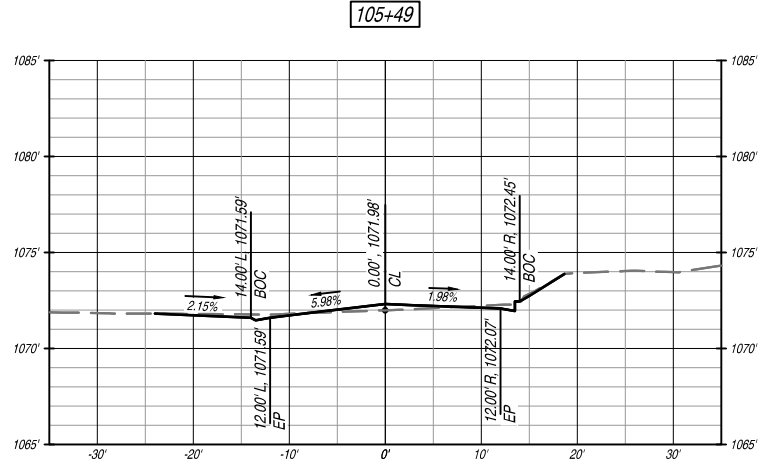
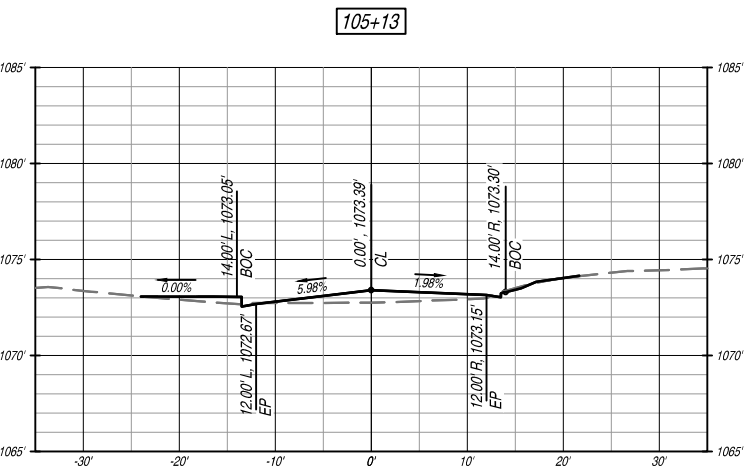
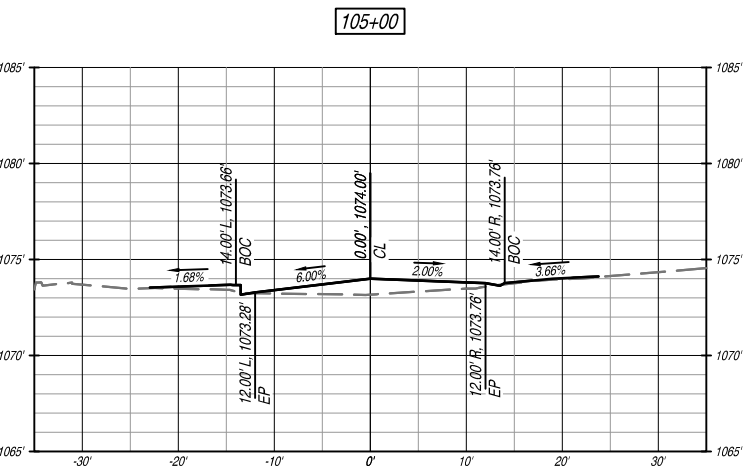
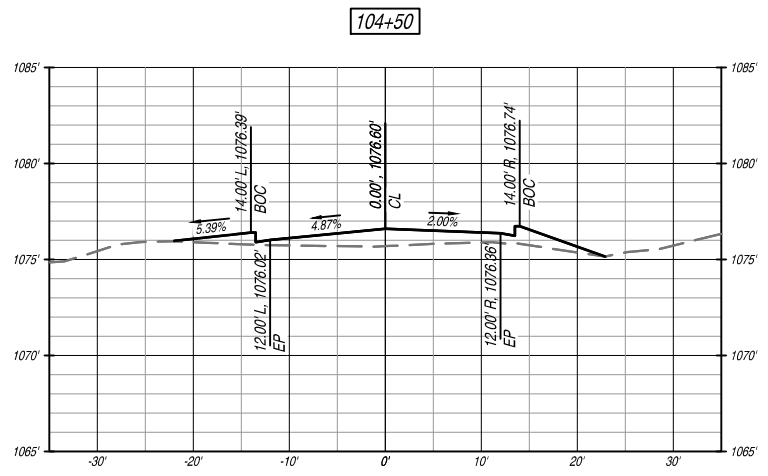
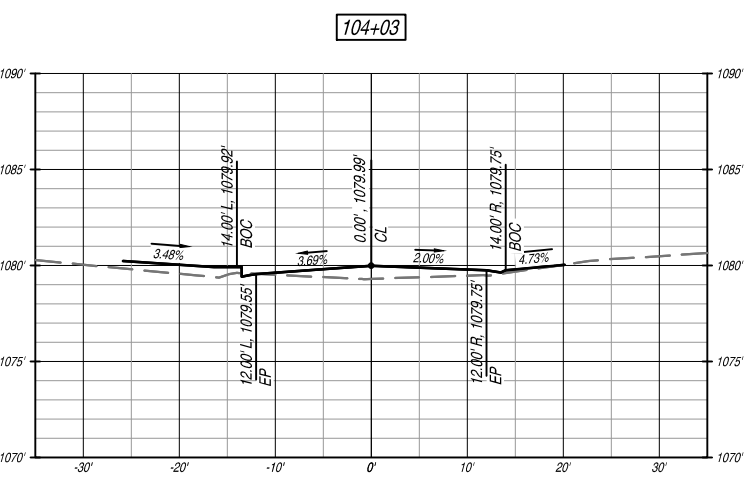
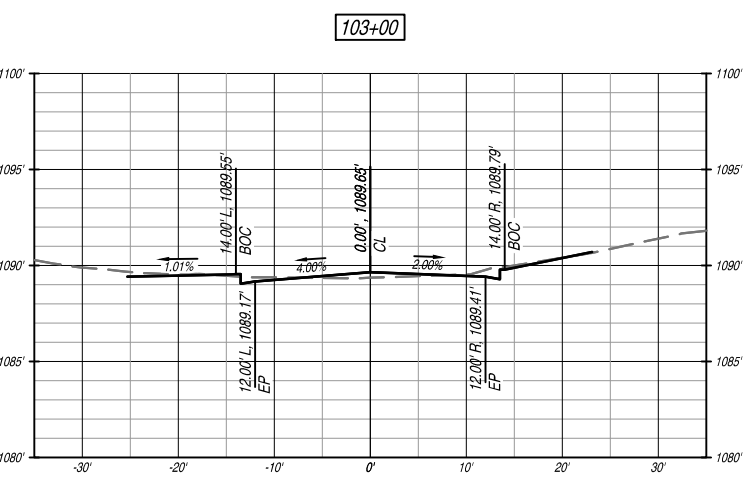
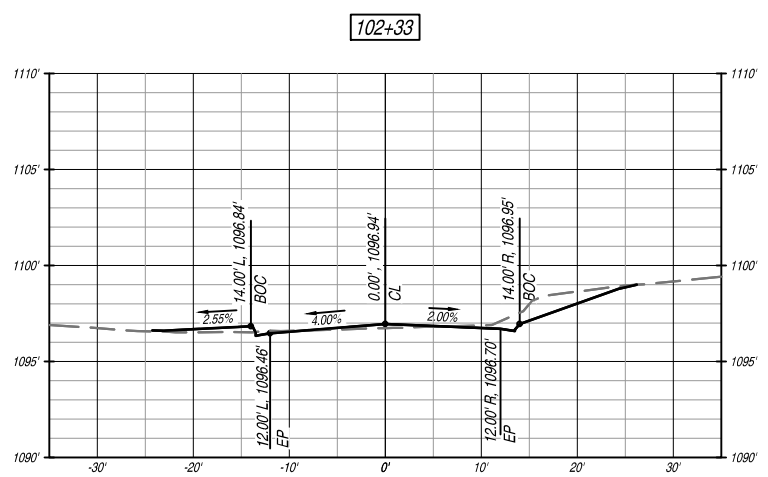
NO.	DATE	DESCRIPTION

FOR BID

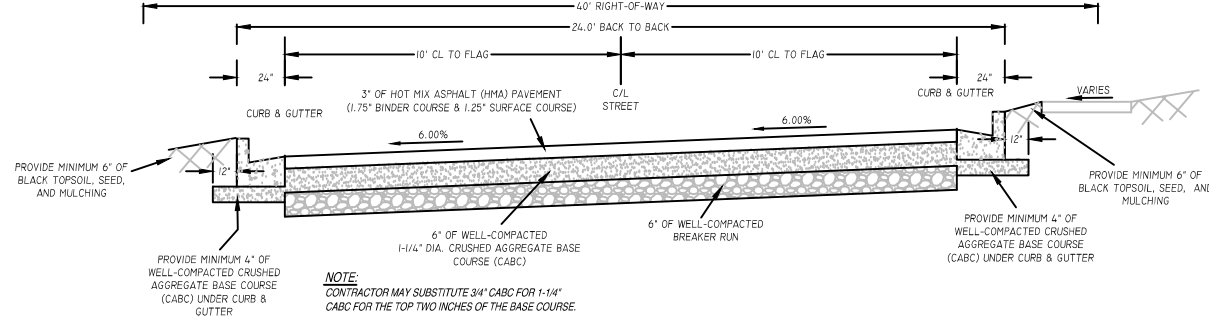
PROJECT NUMBER	D20-001
SHEET NUMBER	NOT TO SCALE
DRAWN BY	C. COVIER
DATE ISSUED	APRIL 27, 2020
SHEET DESC.	DETAILS - ADA & STREET

FOR QUESTIONS REGARDING THIS PROJECT, PLEASE CONTACT:
MR. MARK DIGMAN, P.E.
 DELTA 3 ENGINEERING, INC.
 TELEPHONE: (608) 348-5355

CONSENT STATEMENT
 ALL RIGHTS RESERVED, AND NO REPRODUCTION WITHOUT CONSENT. ALL DRAWINGS, SPECS., REPORTS, DATA, AND OTHER DOCUMENTS CONTAINED ON THIS PLAN SHEET ARE CREATED BY AND FOR DELTA 3 ENGINEERING AND THEIR CLIENTS' USE. REPRODUCTION OR DISTRIBUTION OF ANY CONTENT HEREIN, IN ANY FORM, WHETHER PRINTED, ELECTRONIC, OR OTHERWISE, REQUIRES THE EXPRESS WRITTEN PERMISSION OF THE OWNER.



TYPICAL CROSS SECTION - PINE STREET
 SCALE: N.T.S. (STA. 102+00 TO STA. 106+00)



TYPICAL CROSS SECTION - PINE STREET
 SCALE: N.T.S. (STA. 106+00 TO STA. 109+00)

PROPOSED 2020 INFRASTRUCTURE IMPROVEMENTS - PINE STREET
MINERAL POINT, WI
 PROJECT LOCATION: PINE STREET (W. COMMERCE ST. WASHINGTON ST)
 OWNER: CITY OF MINERAL POINT, 137 HIGH STREET, SUITE 1, MINERAL POINT, WI 53565

REVISIONS		
NO.	DATE	DESCRIPTION

AS-BUILT: BY:

FOR BID	
PROJECT NUMBER	D20-001
SHEET NUMBER	HORIZ.-1"=10'
SCALE	VERT.-1"=5'
DRAWN BY	C.COYIER
DATE ISSUED	APRIL 27, 2020
SHEET DESC.	CROSS-SECTIONS - PINE STREET

